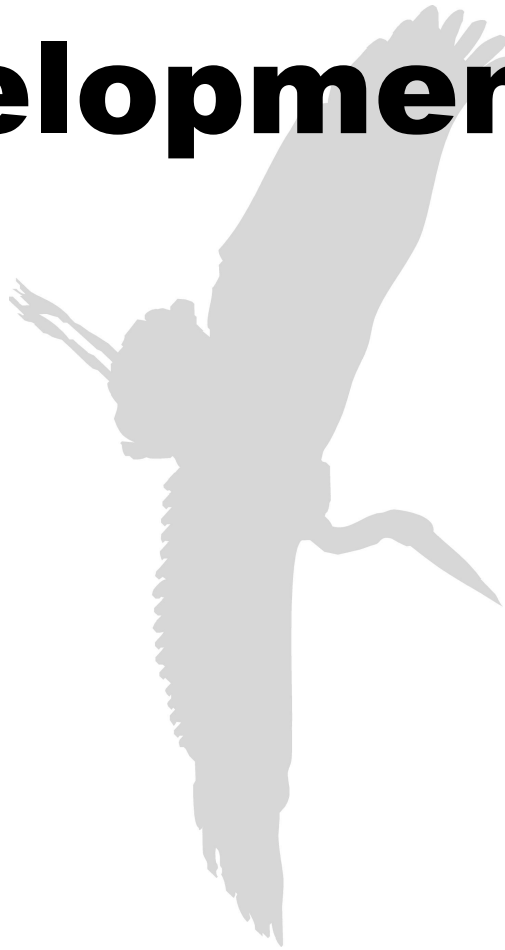


# **2010-2016**

# **Transit**

# **Development**

# **Plan**



# **Kitsap Transit**

Kitsap Transit  
60 Washington Avenue, Suite 200, Bremerton, WA 98337-1888  
Date of Public Hearing: Sept. 20, 2011  
Pursuant to RCW 47.04.280

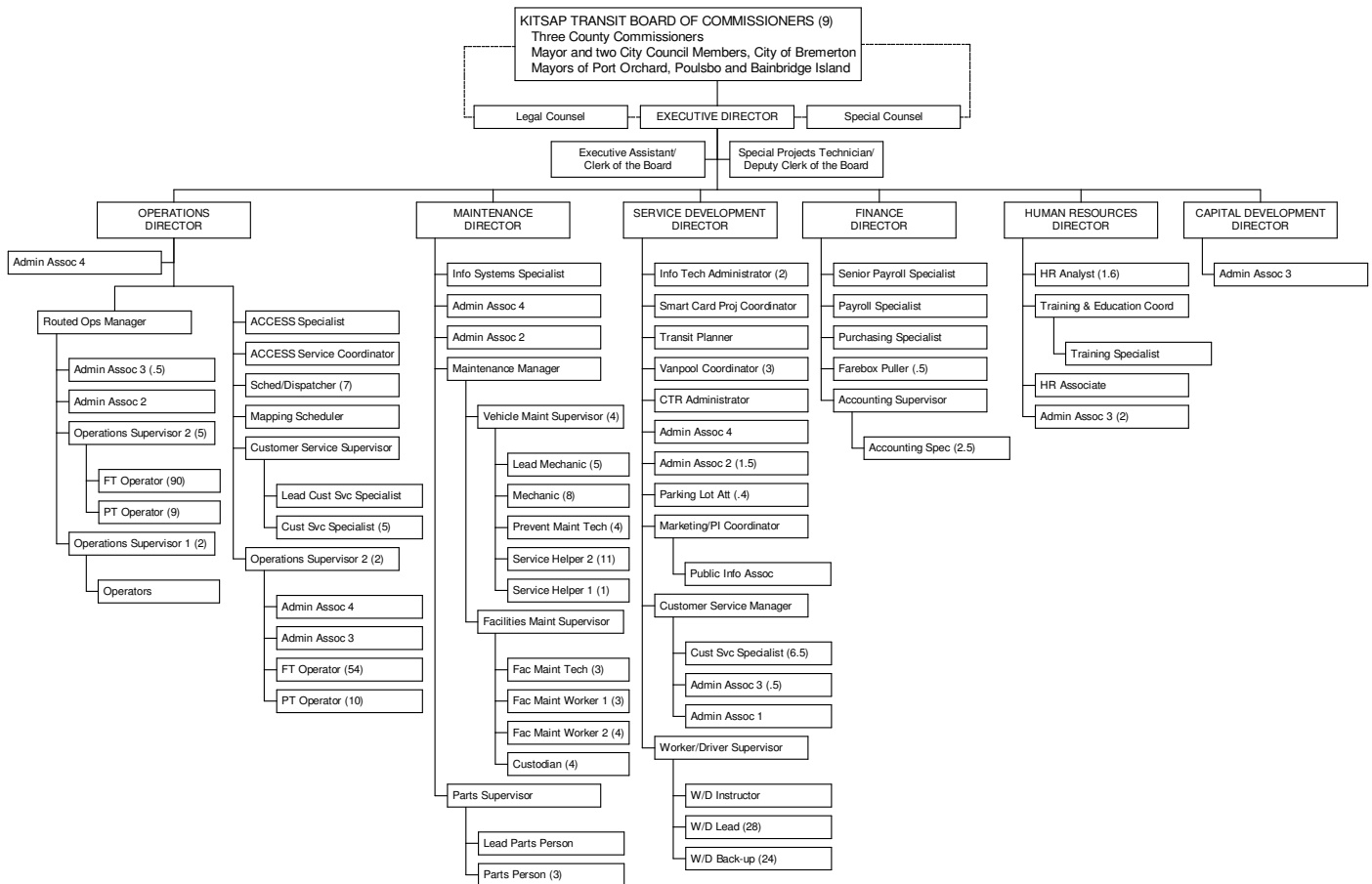
# Table of Contents

<b>Section</b>	<b>Title</b>	<b>Page</b>
I	Organization	3
II	Physical Plant	4
III	Service Characteristics	4
IV	Service Connections	6
V	Activities in 2010	7
VI	Proposed Action Strategies, 2011 - 2017	8
VII	Proposed Changes, 2011 – 2016, Capital Programs	11
VIII	Operating Data, 2010 - 2016	14
X	Operating Revenues and Expenditures, 2010 - 2016	16
Appendices:	I Service Map	
	II Equipment and Facilities Asset Inventory	
	III Rolling Stock Asset Inventory	

## Section I: Organization

Kitsap Transit (KT) is a public transportation benefit area authority, authorized in Chapter 36.57A RCW, and located in Kitsap County, Washington. KT began providing public transportation services in early 1983. KT's system map appears in Appendix I, showing the extent of the agency's service area. Beginning in 2010, as the result of a change in state law, membership on the KT Board of Commissioners increased from nine to ten and now includes one non-voting member who represents the agency's labor unions. The nine voting members of the KT Board are the three Kitsap County commissioners, the mayors of the four incorporated cities in Kitsap County; Bainbridge Island, Bremerton, Port Orchard and Poulsbo and two members member of the Bremerton City Council, as selected by the Bremerton city council president.

Below is the 2010 organizational chart for Kitsap Transit.



In 2010, the agency continued its hiring freeze, reducing staff by eleven (11) full-time equivalents (FTEs). The Parts Department was officially moved from the Finance Division to the Maintenance Division. As of December 31, 2010, Kitsap Transit employed a total of 295 FTEs.

- 3.0 Full-time equivalents in the Executive Division
- 177.8 Full-time equivalents in the Operations Division
- 57.0 Full-time equivalents in the Maintenance Division
- 39.0 Full-time equivalents in the Service Development Division
- 8.1 Full-time equivalents in the Finance Division
- 8.1 Full-time equivalents in the Human Resources Division
- 2.0 Full-time equivalents in the Capital Development Division
- 98.5 Of these full-time equivalents were for Routed Service
- 77.3 Of these full-time equivalents were for *ACCESS* Service
- 15.7 Of these full-time equivalents were for Worker/Driver Service

## **Section II: Physical Plant**

KT's administrative offices are located at 60 Washington Avenue, Suite 200 in Bremerton, WA, 98337. The agency's primary maintenance and operations facility is at 200 Charleston Boulevard, Bremerton, Washington, 98312-4199. In addition, KT has a North Base at 21710 Vetter Road NW, Poulsbo, WA 98370 and a South Base at 1430 Retsil Road, Port Orchard, WA 98366. Both Routed and *ACCESS* operators report to the South Base and to the North Base for transit service in those areas.

KT also has a customer service office in the Bremerton Transportation Center (BTC); a major, multi-modal center serving buses, car ferries and passenger-only ferries that opened in 2000 at 10 Washington Avenue in downtown Bremerton. A commuter-oriented, 72-space bicycle-storage facility, The Bike Barn at Bainbridge Island, opened in 1999 in the center of the Bainbridge Island Transfer Center.

The Appendices contain the completed forms for the state's public transportation management system for all KT's owned and contracted revenue vehicles and facilities.

## **Section III: Service Characteristics**

In 2010, KT provided fixed route, ADA-accessible door-to-door service, Worker/Driver service, and vanpool service, general public dial-a-ride service for parts of Kitsap County and foot ferry service. KT's system map, in Appendix I, shows where Fixed Route, Worker/Driver service and Kitsap Transit Foot Ferry (KTFF) service operated in 2010.

The headways for routes that operated all day were usually one hour. During commute hours, many of these all-day routes were also scheduled to meet Washington State Ferries (WSF) at the Bainbridge Island, Bremerton and Southworth terminals. Weekday service hours were from 4:00 a.m. to 9:00 p.m. On Saturdays, 24 routes were operated on one-hour headways between 9:00 a.m. and 7:00pm

The agency also raised its fares in 2010. On April 1, all fares rose by about 33 percent; the full fare rate went from \$1.50 to \$2.00 and the reduced fare rate increased from 75 cents to \$1.00. The agency also added a \$1.00 surcharge for outlying area service in *ACCESS*.

### **Cash Fares:**

Cash fares are \$2.00 on Routed buses and the KTFF, payable with cash or E-purse loaded on an ORCA card. Cash fares are \$1.00 on Routed buses and the KTFF with a Reduced Fare or Regional Reduced Fare qualified ORCA card or a Regional Reduced Fare Permit Card. Cash fares on *ACCESS* (demand response) buses and Dial-A-Ride services are \$2.00, and there is a \$1.00 surcharge for outlying area service in *ACCESS*.

### **Reduced Fare Eligibility:**

Riders who meet the following criteria are eligible for a Reduced Fare ORCA Card:

- Youth: Age 6-18 with proof of age.
- Low Income: Department of Social and Health Services (DSHS) low income, with proof of DSHS status and family size.

Riders who meet the following criteria are eligible for a Regional Reduced Fare ORCA Card:

- Medicare Cardholders
- Elderly: Age 65 and older with proof of age.
- Disabled: With proof of Medicare card, Social Security Disability benefits, 40% or greater Veterans Affairs disability or Supplemental Security Income benefits for a disability.

### **Monthly Passes**

Monthly Bus Pass - \$50.00

Good on KT Routed service, *ACCESS* (eligible riders only) and KTFF.

Reduced Fare Monthly Bus Pass - \$25.00

Good on KT Routed service, *ACCESS* (eligible riders only) and KTFF. Riders must qualify for and have a Reduced Fare or Regional Reduced Fare-qualified ORCA card to purchase.

### **Regional Monthly Puget Pass**

Valid for fare on Kitsap, Everett, Pierce, Metro, Community and Sound Transit(s) up to the trip value. When riding a service with a higher fare, the difference can be paid with cash or via ORCA E-purse. Many trip values are available. The most common for KT riders are:

Puget Pass - \$2.00 each fare or \$72.00 a month

Puget Pass - \$1.00 Fare or \$36.00 a month

Riders who use WSF can add a monthly ferry pass to their ORCA card in combination with any of the passes above to pay their fare on all the systems they ride.

Transportation Incentive Program (TIP) pass – *Free for eligible Department of Defense (DOD) employees*

Employees of the DOD who commute to work by bus, ferry\*, or vanpool\*\* are eligible to register in the Transportation Incentive Program. Under this program, registered employees can

receive a financial incentive, up to \$230 a month, for their actual commuting costs. The TIP Pass allows free rides on Routed bus, Worker/Driver bus, vanpool and the KTFF or *ACCESS* service.

\*KTFF or WSF (you must either walk on or be a passenger in an eligible vanpool).

\*\* Vanpools may either be public or private. Private vanpools must be registered with Kitsap Transit

### **Free Riders**

- Children under the age of six ride free when accompanied by a fare paying, responsible individual.
- Any of the region's law enforcement personnel and fire fighters, in uniform or out of uniform, inside or outside of their jurisdiction.
- Personal-care attendants traveling with eligible disabled customers.
- Bikes ride free on Kitsap Transit buses and the Kitsap Transit Foot Ferry; limited to space available.

### **Vanpools**

Vanpool rates are determined by the size of the van, the number of miles traveled on the vanpool route and the number of riders on board. A full listing of vanpool fares can be viewed on our website at [www.kitsaptransit.org](http://www.kitsaptransit.org).

### **Worker/Driver Buses**

The one-way cash fare on Worker/Driver (W/D) buses is \$2.00 payable with cash or ORCA card E-purse. W/D riders can also pay their fare with a \$75 KT W/D monthly bus pass loaded on an ORCA card. Monthly passes are valid on W/D routes as well as on Routed, *ACCESS* (eligible riders only) and the KTFF. Most W/D fares are paid by the Navy via TIP.

## **Section IV: Service Connections**

KT provides bus connection services to the following transportation facilities:

- BTC with connections to WSF, KTFF, Mason Transit and other KT bus routes
- Bainbridge Island Ferry Terminal with connections to WSF and other KT bus routes
- Kingston Ferry Terminal with connections to WSF and other KT bus routes
- Southworth Ferry Terminal with connections to WSF
- Port Orchard Ferry Dock with connections to KTFF and other KT bus routes
- Annapolis Ferry dock with connections to KTFF
- West Bremerton Transfer Center with connections to other KT bus routes
- East Bremerton Transfer Center with connections to other KT bus routes
- Kitsap Mall Transfer Center with connections to other KT bus routes
- Poulsbo Transfer Center with connections to other KT bus routes and Jefferson Transit
- Purdy park-and-ride lot in Pierce County with connections to Pierce Transit

In addition, KT provided open-door service to many of the elementary, middle and high schools in its service area, as well as both branches of Olympic College, Bremerton and Poulsbo. All but one of the W/D buses and many vanpool vans served Puget Sound Naval Shipyard (PSNS)/Naval Base Kitsap. Other vanpools serve Naval Base Bangor along with one W/D bus.

KT operated Routed and/or W/D service to 24 park and ride lots throughout Kitsap County in 2010.

## **Section V: Activities in 2010**

In 2010, we addressed RCW 47.04.280 Transportation System Policy Goals through the following action strategies:

**1. Preservation:** To maintain, preserve, and extend the life and utility of prior investments in transportation systems and services.

In 2010, KT experienced a 9% decrease in ridership on a total system basis. The Routed program posted a ridership loss of 10.5% while the KTFF lost 6% of its ridership. The W/D program experienced a ridership decrease of 4% and vanpools ridership dropped 9%. The *ACCESS* program experienced a ridership drop of 7%.

- At the BTC, the last phase of development was completed in 2010. A tunnel to redirect cars exiting the WSF ferry away from the pedestrian downtown core was completed.

**2. Safety:** To provide for and improve the safety and security of transportation customers and the transportation system.

- All bus maintenance requirements were met within the time deadlines in the agency's preventative maintenance systems.
- All driver and mechanic training programs were completed on schedule.
- Maintenance schedules for all facilities were maintained.
- KT experienced a significant decrease in vehicle accidents in Routed service and *ACCESS* services in 2010 compared to 2009. We also experienced a significant decrease in reportable on-the-job injuries in the Operations Department between 2009 and 2010. There were no vehicle accidents in the vanpool program. There was one fatality.
- In concert with WSDOT, WSF and the US Navy, KT substantially increased security at hubs and main employment centers in 2010.
- KT coordinated its Emergency Action Plans with the Kitsap County Department of Emergency Management.
- The BTC Facilities Management Council (including WSF operations) worked with WSDOT Project Management for the Bremerton Tunnel to keep service on schedule and pedestrians safe. KT made a number of concessions to advance the WSDOT construction schedule during 2010.
- The Washington State Transit Insurance Pool (WSTIP) assessed the property value of all KT's marine infrastructure; floats, gangways and docks, so that the agency's insurance coverage reflected the actual value of these assets.

**3. Mobility:** To improve the predictable movement of goods and people throughout Washington State.

- KT met county-wide demand, far beyond the minimum Americans With Disabilities Act (ADA) three-quarter mile requirement, through increased efficiency in *ACCESS* dial-a-ride and the use of VanLink social service agency vanpools.
- KT employed 27 full-size, low-floor buses and 17 new, smaller, low-floor buses in its Routed service, contributing substantially to the ability to board, transfer and de-board passengers in reasonable lengths of time.
- The agency’s regular Routed system accomplished positive meets at transfer centers or direct long-trip express service between centers.
- KT responded to all WSF breakdowns with sufficient “relocated” bus service to bring all displaced ferry riders either to their home port or their final trip end.

**4. Environment:** To enhance Washington’s quality of life through transportation investments that promote energy conservation, enhance healthy communities and protect the environment.

- KT’s use of the “smallest bus possible” in Routed service resulted in routed fleet fuel MPG increase of 77% (from 5.7 to 7.4 miles per gallon) and subsequently reduced routed-bus-generated pollution, especially carbon dioxide.
- KT, representing most of the state’s transit agencies, worked with Western Washington University and its Vehicle Research Institute (WWU VRI) to develop an advanced composite hybrid bus, which would achieve mileage of 20+ miles per gallon, for use in *ACCESS* and shuttle bus service.
- Introduced porous pavement.
- New industrial NPDES permit and (?) extra requirements.

**5. Stewardship:** To continuously improve the quality, effectiveness and efficiency of the transportation system.

- Mode split (2+ HOV) is gathered on major State Route highways during peak periods.
- Appointed a Sustainability officer and adopted a Sustainability Plan with benchmarks.

## **Section VI: Proposed Action Strategies, 2011- 2017**

The proposed changes in Section VI, below, are action strategies that reflect upon the following state Transportation Service Objectives.

**1. Preservation:** To maintain, preserve, and extend the life and utility of prior investments in transportation systems and services.

- Continue a 30-year service planning process with the KT Board of Commissioners focusing heavily on real integration of land use and transit planning.

- Reorganize routes to increase efficiency and reduce costs.
- Continue a replacement program for the W/D fleet and Routed and *ACCESS* small buses.
- Keep cost per passenger at the same level or lower. Maintain cost per mile at 59 cents and lower fleet fuel economy to 7.5 miles per gallon.
- Continue to respond to all ferry system breakdowns with extra between-terminal service (i.e. Bainbridge Island to Bremerton and vice versa).
- Continue to collaborate with the state, especially WSF, and the local Department of Emergency Management on security and emergency practices and drills.
- Continue 100% adherence to scheduled maintenance requirements for vehicles and facilities.
- Complete upgrade of KT's overall radio system to improve internal and external radio communications.

**2. Safety:** To provide for and improve the safety and security of transportation customers and the transportation system.

- Maintain current security standards and maintain the security plan with WSF for the state-operated ferry terminals in Kitsap County.

**3. Mobility:** To improve the predictable movement of goods and people throughout Washington State.

- Continue to meet county-wide *ACCESS* demand within budget by use of zoning and better connections to Routed trunk routes.
- Continue to meet with three advisory committees for input on all KT programs and for special needs issues and discussions.
- Maintain high rate of high mode-share in rush hour in Kitsap County's two most congested corridors with a rush-hour rate of 20+ percent on SR 305 from the Bainbridge Island Ferry Terminal to Poulsbo and a rush-hour rate of nearly 50 percent on SR3 in Gorst.
- Continue connection standards with WSF, public and private ferry operators, Mason, Jefferson and Pierce County transit systems at 2010 levels.

**4. Environment:** To enhance Washington's quality of life through transportation investments that promote energy conservation, enhance healthy communities and protect the environment.

- Implement and monitor proposed (20%) greenhouse gas emissions and sustainability program.
- Continue efforts, through new clean-air buses and use of smaller buses in general, to reduce transit vehicle fuel use and emissions to minimum levels. KT will continue its practice of replacing older buses with new, cleaner-operating vehicles.
- Study fleet composition and available technology to enhance KT fleet mileage, with an interim fleet-average goal of eight miles per gallon within the next two to five years.

- Work with WWU and its Vehicle Research Institute as the representative of other transits around Washington State to develop an advanced composite hybrid bus, which would achieve mileage of 20+ miles per gallon, for use in *ACCESS*-paratransit and shuttle bus service.
- Continue plans to test new “porous pavements” in development of new or expanded park and ride lots and other LID techniques building off the Harper Church park-and-ride lot as our porous pavement prototype.

**5. Stewardship:** To continuously improve the quality, effectiveness, and efficiency of the transportation system.

- Continue CTR support at a very high level to major employers and centers with a focus on significantly increasing KT’s mode share at PSNS (to above 50%).
- Continue assisting cities, especially Bremerton and Port Orchard, in downtown redevelopment activities and other densification/Transit Oriented Development projects.
- Assist in development of cities Master Plans by providing information for allocation of transit benefits for urban centers.

## Section VII: Proposed Changes, 2011-2016, Capital Projects

<b>1. Buses</b>	<b>2011</b>	<b>2012</b>	<b>2013</b>	<b>2014</b>	<b>2015</b>	<b>2016</b>
A. New Routed replacement coaches	Nine 28-foot ARBOCs 1.14M (5307)					Double-decker 4.2M (5307)
B. New <i>ACCESS</i> replacement coaches		Ten buses 1.3M (5307)	Ten buses 1.4M (5307)			
C. Worker/Driver Bus replacement	1.13M (TIP)					
D. Worker Driver engine upgrades	150K (TIP)	200K (TIP)	200K (TIP)	200K (TIP)		
E. Electric Vehicle bus program		Concept plan: 100K (5307)	Options & Cost-Benefit Analysis: 500K (5307)	Implement selected options. See next page: under Transfer Center Improvements, with EV recharge facilities		
F. Rideshare Vehicles		100K				
G. Support Vehicles	100K	100K	100K	100K	100K	100K
<b>2. Operations Base Improvements</b>						
A. Charleston Base		Upgrade HVAC to new sustainability standards 500K (5307)	Tall bus bay(s) 200K (TIP)	Tall bus bay(s) 800K (TIP)		
B. North Base	225K <sup>1</sup> (STP-flex and state DOE)	1.094M (part State DOE)				
<b>3. Passenger-Ferry Docks</b>						
A. Bremerton Transportation Center POF dock, Float A	200K (FTA New Starts)	1.5M (FTA New Starts & STP-flex)				
B. Annapolis Dock upgrade		Design environmental: 150K (STP-flex) & 190K (5307)	4M (FBD)			
C. Port Orchard dock upgrade				1M (FBD)		
<b>4. Passenger Ferry-Vessels<sup>2</sup></b>						
A. Rich Passage I	Boat: 1.7M (FTA NS and FBD)	Beach response testing: Operation 600K <sup>3</sup> (5307) & Research 1.44M (FBD)	Environmental follow-up: Research 400K (FBD)			

<sup>1</sup> Funding is in-hand from the Federal Transit Administration and state Dept. of Ecology

<sup>2</sup> All funds for categories 1 (Rich Passage I) and 2 (Kitsap Transit Foot Ferry) are in-hand from awarded sources and KT will use toll credits for its cash match.

<sup>3</sup> All federal formula 5307 funds slated for POF use will be matched by non-cash toll credits from the 2011 legislative budget

B. Kitsap Transit Foot Ferry (1. Admiral Pete & 2. sister ship)	875K (1.-FBD)	2M (2.-FBD+TIP)				
C. Asset preservation/Improvement (Carlisle II)		300K				

**5. Transfer Centers, Shelters and Park and Rides:** See Transfer Centers, Shelters and Improvements below

**Transfer Centers, Shelters and Improvements including Electric Vehicle recharge facilities,** in order of priority

Transfer Center/Vehicle Exist. Capacity	Status		Nature of Work	Year/\$					
	Existing Issues	New		2011	2012	2013	2014	2015	2016
<b>1. Eastside/4</b> feeders, 2 trunk lines	No detents, ADA issues, no long-term site security	Riddell & Wheaton	<ul style="list-style-type: none"> <li>▪ New location consistent with COB comp plan &amp; WSDOT corridor study. Six buses, one each direction on trunk and four feeders, recharge capability</li> <li>▪ NEPA, public scoping, feasibility of sites</li> <li>▪ ROW acquisition and construction</li> </ul>		400K	2M*	2M*	1M*	
<b>2. Silverdale/4</b>	Interim for four buses for 3-5 years \$170K	Greaves Way future Silverdale business district with master site plan incl. parking for 250 max. vehicles	<ul style="list-style-type: none"> <li>▪ Site work to complete interim facility</li> <li>▪ Site plan for transit facilities with prelim environmental work &amp; assessments, ROW/easement plan, some shared costs with development partners</li> <li>▪ ROW and construction phase based on regional grant award</li> </ul>	170K 25K	300K	3M*			
<b>3. Bainbridge Island/16</b>	Sidewalk access for 12 buses, 2 non-ADA stalls, need 8 more level stalls	COBI ferry district plan. No double parking. Pedestrians board/alight from curb. Continue to serve bikes.	<ul style="list-style-type: none"> <li>▪ New terminal LU plan by COBI?</li> <li>▪ Expanded site plan for 20 buses with curb loading</li> <li>▪ Environmental review and design</li> <li>▪ ROW plan/acquisition</li> <li>▪ EV capacity, overnight storage &amp; recharge for 8-10 small buses, bike storage &amp; pedestrian canopy</li> </ul>		350K	250K	2M*	3M*	
<b>4. Poulsbo</b> <ul style="list-style-type: none"> <li>• Viking Ave. /5</li> <li>• Supplants 8<sup>th</sup> Ave./4</li> </ul>	8 <sup>th</sup> avenue inadequate, no kiss 'n ride, limited bus capacity	Future Viking SR305 stop for 4 to 5 buses in P&R lot to replace existing transfer center	Design TC/super-stop in P&R lot w/ pedestrian connections to new Ed Rose development. Grants in-hand: 200K state design funds, \$1700K state construction funds, \$985K federal ROW funds with toll credits available	985K	2.4M*				

<b>5. Bremerton Transportation Center/12</b>	Secured facility	Upgrades for EV support levels	▪ Develop EV capability for buses, carpools, SCOOT			750K*			
<b>6. Port Orchard Intermodal Terminal/4</b>	DNR aquatics lease and upland control	respond to downtown re-development	▪ New EV capability, covered waiting area(s), second shelter for bus transfer zone (Redevelopment plan shared with COPO and Port)			250K			
<b>7. Westside/5</b>	Secure until 6/1/19 when city lease expires;	Interim: Remain in same location with minor improvements	Improve pedestrian canopy and image and signage from SR 3, install sustainable lighting and add restrooms if bowling alley is not accessible			500K			
<b>Estimated FUNDING TOTALS:</b>				<b>6.7M</b>	<b>13.02M</b>	<b>13.7M</b>	<b>6.2M</b>	<b>4.2M</b>	<b>4.4M</b>

*\* To be supplemented by other competitive grant funds, especially Regional STP, federal Ferry Boat Discretionary and State Regional Mobility funds*

<b>Estimated anticipated SOURCES OF FUNDS contingent on availability of local match and federal and state budgets</b>	<b>2011</b>	<b>2012</b>	<b>2013</b>	<b>2014</b>	<b>2015</b>	<b>2016</b>
<i>5307 Federal Formula Funds (5307)</i>	<i>2.6M</i>	<i>2.6M</i>	<i>4.2M</i>	<i>4.2M</i>	<i>4.2M</i>	<i>4.2M</i>
<i>Federal Ferry Boat Discretionary Funds (FBD)</i>	<i>1.5M</i>	<i>1.4M</i>	<i>4.4M</i>	<i>1M</i>	<i>0</i>	<i>1.5M</i>
<i>Other Competitive Federal Funds</i>	<i>985K</i>	<i>1.9M</i>	<i>6.05M</i>	<i>3.2M</i>	<i>2M</i>	<i>0</i>
<i>State Funds</i>	<i>225K</i>	<i>5M</i>	<i>250K</i>	<i>2M</i>	<i>250K</i>	<i>2M</i>
<i>Transportation Incentive Pass (TIP)</i>	<i>860K</i>	<i>860K</i>	<i>860K</i>	<i>860K</i>	<i>860K</i>	<i>860K</i>
<i>Contingent on availability of local funds (sales tax)</i>	<i>1.5M</i>	<i>1.5M</i>	<i>2M</i>	<i>2M</i>	<i>2M</i>	<i>2M</i>
<b>Anticipated TOTALS</b>	<b>7.67M</b>	<b>13.26M</b>	<b>17.76M</b>	<b>13.26M</b>	<b>9.31M</b>	<b>10.56M</b>

## Section VIII: Operating Data, 2010-2016

(All figures, except 2010, in thousands of units)

<b><u>Fixed Route Services</u></b>	<b><u>2010</u></b>	<b><u>2011</u></b>	<b><u>2012</u></b>	<b><u>2013</u></b>	<b><u>2014</u></b>	<b><u>2015</u></b>	<b><u>2016</u></b>
Revenue vehicle hours	91,850	92	92	92	92	92	92
Total vehicle hours	115,728	116	116	116	116	116	116
Revenue vehicle miles	1,688,182	1670	1670	1670	1670	1670	1670
Total vehicle miles	2,137,390	2140	2140	2140	2140	2140	2140
Passenger trips	2,493,276	2,475	2,500	2,500	2,600	2,750	3,000
Fatalities	1						
Reportable injuries	4						
Collisions	0						
Diesel fuel consumed (gal)	396,620						
<b><u>Demand Response Services</u></b>	<b><u>2010</u></b>	<b><u>2011</u></b>	<b><u>2012</u></b>	<b><u>2013</u></b>	<b><u>2014</u></b>	<b><u>2015</u></b>	<b><u>2016</u></b>
Revenue vehicle hours	80,839	81	80	80	80	80	80
Total vehicle hours	91,835	91	91	91	91	91	91
Revenue vehicle miles	1,403,398	1400	1400	1400	1400	1400	1400
Total vehicle miles	1,520,685	1500	1500	1500	1500	1500	1500
Passenger trips*	308,227	300	300	300	310	315	315
Fatalities	0						
Reportable injuries	0						
Collisions	0						
Diesel fuel consumed (gal)	147,420						
Gasoline consumed (gal)	11,708						
<b><u>Worker/Driver Services</u></b>	<b><u>2010</u></b>	<b><u>2011</u></b>	<b><u>2012</u></b>	<b><u>2013</u></b>	<b><u>2014</u></b>	<b><u>2015</u></b>	<b><u>2016</u></b>
Revenue vehicle hours	12,862	13	13	13	13	13	13
Total vehicle hours	15,796	16	16	16	16	16	16
Revenue vehicle miles	261,979	265	265	265	265	265	265
Total vehicle miles	282,465	285	285	285	285	285	285
Passenger trips	384,659	385	387	390	393	395	400
Fatalities	0						
Reportable injuries	0						
Collisions	0						
Diesel fuel consumed (gal)	80,246						

\*includes up to 10% general public trips by 2015

<b><u>Vanpool Services</u></b>	<b><u>2010</u></b>	<b><u>2011</u></b>	<b><u>2012</u></b>	<b><u>2013</u></b>	<b><u>2014</u></b>	<b><u>2015</u></b>	<b><u>2016</u></b>
Revenue vehicle hours	37,256	37	37	37	37	37	37
Total vehicle hours	37,256	37	37	37	37	37	37
Revenue vehicle miles	1,146,414	1140	1140	1140	1140	1140	1140
Total vehicle miles	1,146,414	1140	1140	1140	1140	1140	1140
Passenger trips	259,696	250	255	257	260	262	265
Fatalities	0						
Reportable injuries	0						
Collisions	0						
Diesel fuel consumed (gal)	21,880						
Gasoline consumed (gal)	55,178						

<b><u>Foot Ferry Services</u></b>	<b><u>2010</u></b>	<b><u>2011</u></b>	<b><u>2012</u></b>	<b><u>2013</u></b>	<b><u>2014</u></b>	<b><u>2015</u></b>	<b><u>2016</u></b>
<b><u>Kitsap Transit Foot Ferry</u></b>							
Revenue vehicle hours	5,982	6	6	6	6	6	6
Total vehicle hours	6,035	6	6	6	6	6	6
Revenue vehicle miles	44,448	44	44	44	44	44	44
Total vehicle miles	45,713	44	44	44	44	44	44
Passenger trips	444,296	445	447	450	452	455	457
Fatalities	0						
Reportable injuries	0						
Collisions	0						
Diesel fuel consumed (gal)	42,658						

## Section IX - Operating Revenues and Expenditures (2010 - 2016)

(All Figures in 000s of Dollars)

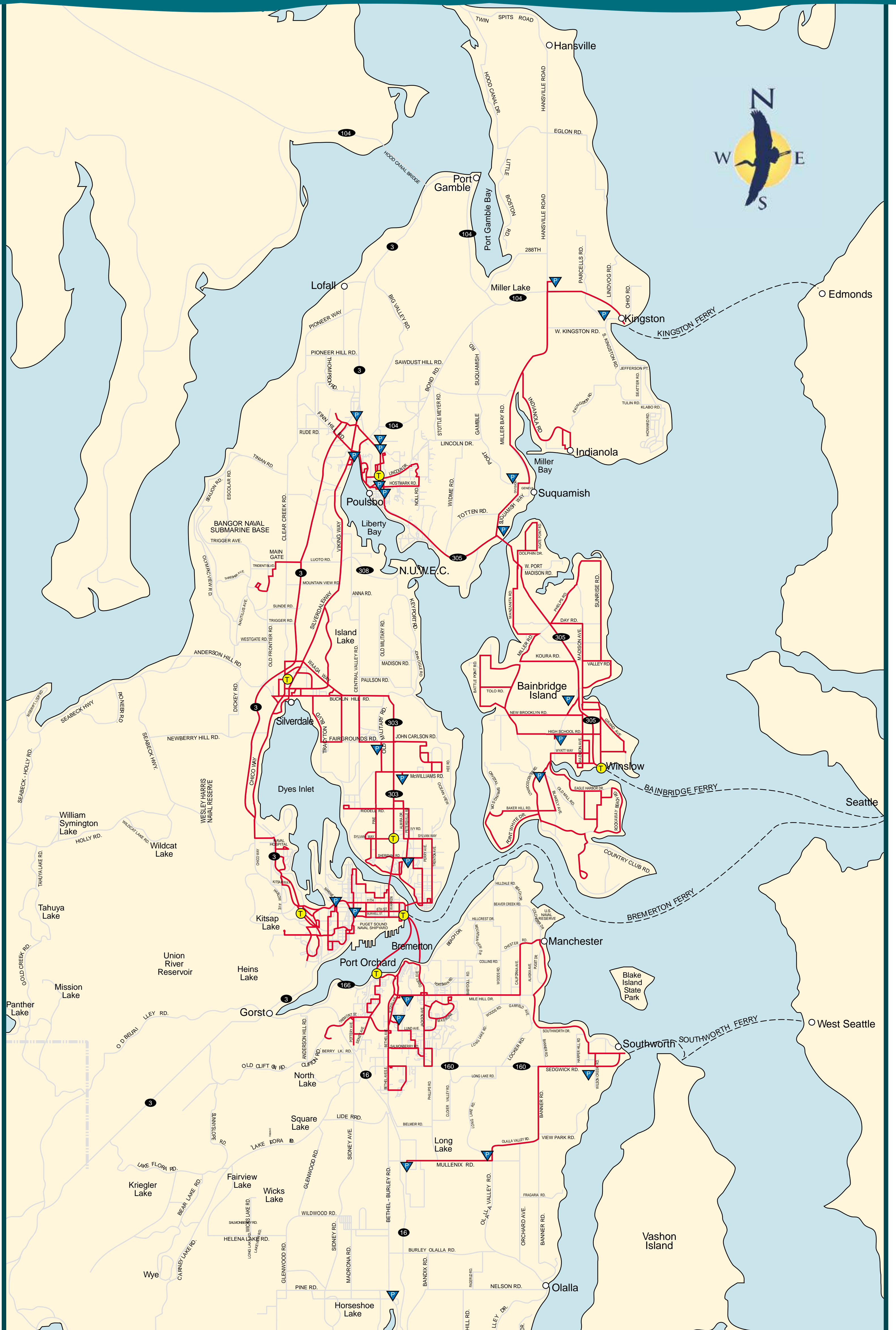
	Actual	Budget					
	2010	2011	2012	2013	2014	2015	2016
<b>REVENUE</b>							
FARES - ROUTED	3,815	3,610	3,510	3,550	3,590	3,630	3,670
FARES - WORKER DRIVER	2,121	2,322	2,340	2,360	2,380	2,400	2,420
FARES - VANPOOL	958	918	930	940	950	960	970
FARES - LOCAL PASSENGER ONLY FERRY	752	910	940	950	960	970	980
FARES - DEMAND RESPONSE	307	300	300	300	300	300	300
PARKING LOT	141	141	140	140	140	140	140
ADVERTISING	65	57	60	60	60	60	60
RENTAL INCOME	340	336	350	350	350	350	350
SALES TAX - NET	25,501	26,010	26,700	27,500	28,300	29,300	30,300
STATE AUTHORIZATION	426	601	575	575	575	575	575
OPERATING GRANTS	83	82	90	90	90	90	90
INTEREST INCOME	138	135	110	120	130	140	150
OTHER INCOME	77	94	25	25	25	25	25
<b>TOTAL REVENUE</b>	<b>34,724</b>	<b>35,516</b>	<b>36,070</b>	<b>36,960</b>	<b>37,850</b>	<b>38,940</b>	<b>40,030</b>
<b>OPERATING EXPENSE (1)</b>							
ROUTED SERVICE	15,572	16,090	16,590	17,420	18,290	19,200	20,160
WORKER DRIVER	2,046	2,594	2,630	2,760	2,900	3,050	3,200
DEMAND RESPONSE	7,608	7,831	8,140	8,550	8,980	9,430	9,900
VANPOOL	1,375	1,516	1,460	1,530	1,610	1,690	1,770
LOCAL PASSENGER ONLY FERRY	1,788	1,878	1,860	1,950	2,050	2,150	2,260
<b>TOTAL OPERATING EXPENSE (2)</b>	<b>28,389</b>	<b>29,909</b>	<b>30,680</b>	<b>32,210</b>	<b>33,830</b>	<b>35,520</b>	<b>37,290</b>
<b>NET CASH AVAILABLE FROM OPERATIONS</b>	<b>6,334</b>	<b>5,607</b>	<b>5,390</b>	<b>4,750</b>	<b>4,020</b>	<b>3,420</b>	<b>2,740</b>
BEGINNING UNRESTRICTED CASH	5,417	6,565	6,396	5,591	6,236	6,031	6,166
NET CASH AVAILABLE FROM OPERATIONS	6,334	5,607	5,390	4,750	4,020	3,420	2,740
PRINCIPAL AND INTEREST PAYMENT	(3,368)	(3,360)	(3,350)	(1,700)	(860)	(860)	(860)
TIP CONTRIBUTION TO CAPITAL RESERVE	(875)	(860)	(870)	(880)	(890)	(900)	(910)
CAPITAL PURCHASES, NET	(1,728)	(1,760)	(1,500)	(2,000)	(2,000)	(2,000)	(2,000)
OTHER, NET (3)	785	(540)	(475)	475	(475)	475	(475)
<b>ENDING UNRESTRICTED CASH</b>	<b>6,565</b>	<b>5,652</b>	<b>5,591</b>	<b>6,236</b>	<b>6,031</b>	<b>6,166</b>	<b>4,661</b>

(1) Excluding salaries and benefits, operating expenses assume an inflationary adjustment of 2.5% consistent with ten year annual average increase of the Seattle-Tacoma-Bremerton CPI.

(2) Total operating expense excludes depreciation and amortization expense.

(3) Due primarily to cash flow timing difference adjustments.

# Kitsap Transit System Map



**APPENDIX II**

**Public Transportation Management System  
Owned Facility Inventory**

Agency/Organization: Kitsap Transit

Date: 12/31/2010

	<b>Facility Code</b>	<b>Facility Name</b>	<b>Condition (points)</b>	<b>Age (years)</b>	<b>Remaining Useful Life (years)</b>	<b>Replacement Cost (\$)</b>	<b>Comments</b>
1	11	Central Operations Base	85	27	0	\$250,000	Good Working Order
2	10	Building, 200 Charleston Blvd.	85	18	2	\$10,088,355	Same as above
3	10	Harborside Bldg., 60 Washington Ave.	100	6	15	\$8,000,000	Same as above
4	23	Harborside Garage, 60 Washington Ave.	100	6	15	\$3,921,781	Same as above
5	10	ACCESS, Werner Rd.	85	13	0	\$121,816	Same as above
6	9	Park/Ride, Church of Nazarene	85	18	0	\$150,000	Same as above
7	9	Mullenix Park/Ride	85	13	0	\$137,062	Same as above
8	9	Harper Churh Park/Ride	100	0	20	\$3,657,082	Same as above
9	9	George's Corner Park/Ride	90	10	10	\$1,224,000	Same as above
10	16	Bremerton Transportation Center	90	10	10	\$22,844,601	Same as above
	<b>Facility Code</b>	<b>Facility Name</b>	<b>Condition (points)</b>	<b>Age (years)</b>	<b>Remaining Useful Life (years)</b>	<b>Replacement Cost (\$)</b>	<b>Comments</b>

**APPENDIX II**

11	23	BTC Float "A"	95	9	11	\$3,455,883	Same as above
12	16	Port Orchard Intermodal Terminal	100	6	15	\$3,667,761	Same as above
13	6	Poulsbo Transfer Center	95	8	0	\$309,492	Same as above
14	9, 22	Gateway Center	90	9	0	\$1,439,604	Same as above
15	6	Bainbridge Island Transfer Center	95	10	10	\$894,378	Same as above
16	15	Bike Barn/Bainbridge Island	90	11	9	\$228,000	Same as above
17	9	Annapolis Park/Ride	95	7	0	\$325,401	Same as above
18	22	North Base Maint/Ops Facilities	80	6	4	\$125,516	Same as above
19	22	South Base Maint/Ops Facilities	80	10	10	\$102,502	Same as above
20	22	North Base 21709 Vetter Rd. Maint./Ops.	95	4	16	\$998,031	Same as above
21	8	BTC Pedestrian Canopy	100	2	18	\$1,022,018	Same as above
22	16	BTC Float "B"	90	10	10	\$6,937,429	Same as above
23		Main Base Expansion 196 & 198 Charleston Blvd	100	<b>0</b>	<b>20</b>	<b>\$6,380,064</b>	Same as above

**Appendix III**  
**Public Transportation Management System**  
**Owned Rolling Stock Inventory**  
**Agency: Kitsap Transit**  
**Date: 12/31/2010**

<i>I hereby certify that all information reported in this inventory reflects true, accurate and complete information for the agency/organization listed.</i>															
<i>Signature and Title</i>													<i>Date</i>		
WSDOT															
YEAR / MAKE / MODEL	VEH CODE	V.I.N.	EQ#	LTD MILES	CONDITION	AGE	REM. LIFE	REP. \$ (THOUSANDS)	ADA ACCESS	SEATING	FUEL TYPE	TITLE (YES/NO)	LICENSE	STATUS	
1	1993 / FRD / ECONOLINE 350 20'	13	1FBJS31M6PHB93001	288	105269	80	17	0	20	NO	12	D	NO	: VP2738	ACTIVE
2	1993 / FRD / ECONOLINE 350 20'	14	1FBJS31MXPBH93002	289	119004	80	17	0	20	NO	12	D	NO	: VP2739	ACTIVE
3	1993 / FRD / ECONOLINE 350 20'	13	1FBJS31M1PHB93003	290	152604	80	17	0	20	NO	12	D	NO	: VP2740	ACTIVE
4	1993 / FRD / ECONOLINE 350 20'	13	1FBJS31M4PHB93027	314	148544	80	17	0	20	NO	12	D	NO	: VP2764	ACTIVE
5	1993 / FRD / ECONOLINE 350 20'	14	1FBJS31M8PHB93029	316	110868	80	17	0	20	NO	12	D	NO	: VP2766	ACTIVE
6	1995 / FRD / VAN 20'	13	1FBJS31M4PHB93013	350	122640	80	15	0	20	NO	15	D	NO	: RS00674	ACTIVE
7	1995 / FRD / VAN 20'	14	1FBJS31FXSHB00439	351	156150	80	15	0	20	NO	15	D	NO	: RS00679	ACTIVE
8	1995 / FRD / VAN 20'	13	1FBJS31F6SHB00440	353	131410	80	15	0	20	NO	15	D	NO	: RS00688	ACTIVE
9	1995 / FRD / VAN 20'	13	1FBJS31F4SHB02428	356	226931	80	15	0	20	YES	5+1	D	NO	: RS00677	ACTIVE
10	1995 / FRD / VAN 20'	13	1FBJS31FXSHB00442	358	176507	80	15	0	20	NO	15	D	NO	: RS00676	ACTIVE
11	1995 / FRD / VAN 20'	13	1FBJS31F3SHB00444	360	174180	80	15	0	20	NO	15	D	NO	: RS00689	ACTIVE
12	1995 / FRD / VAN 20'	13	1FBJS31F8SHB02433	361	258349	80	15	0	20	YES	5+1	D	NO	: RS00678	ACTIVE
13	1995 / FRD / VAN 20'	13	1FBJS31F4SHB02431	362	198872	80	15	0	20	NO	15	D	NO	: RS00683	ACTIVE
14	1995 / FRD / VAN 20'	13	1FBJS31F0SHB00434	364	159746	80	15	0	20	NO	15	D	NO	: RS00696	ACTIVE
15	1995 / FRD / VAN 20'	13	1FBJS31F8SHB00438	365	145366	80	15	0	20	NO	15	D	NO	: RS00697	ACTIVE
16	1995 / FRD / VAN 20'	13	1FBJS31F9SHB00447	366	184628	80	15	0	20	NO	15	D	NO	: RS00673	ACTIVE
17	1995 / FRD / VAN 20'	13	1FBJS31F2SHB02430	367	245050	80	15	0	20	YES	5+1	D	NO	: RS00684	ACTIVE
18	1995 / FRD / VAN 20'	13	1FBJS31F6SHB02432	368	161690	80	15	0	20	YES	5+1	D	NO	: RS00682	ACTIVE
19	1995 / FRD / VAN 20'	13	1FBJS31F9SHB00450	369	232122	80	15	0	20	NO	15	D	NO	: RS00694	ACTIVE
20	1995 / FRD / VAN 20'	13	1FBJS31F6SHB02429	370	267976	80	15	0	20	YES	5+1	D	NO	: RS00685	ACTIVE
21	1995 / FRD / VAN 20'	13	1FBJS31F0SHB00448	371	210989	80	15	0	20	NO	15	D	NO	: RS00692	ACTIVE
22	1995 / FRD / VAN 20'	14	1FBJS31F0SHB00451	373	191281	80	15	0	20	NO	15	D	NO	: RS00695	ACTIVE
23	1999 / GMC / SAFARI TM11006	13	1GKDM19W4XB537363	416	63602	90	11	0	17	NO	8	G	NO	: RS03178	ACTIVE
24	1999 / GMC / SAFARI TM11006	13	1GKDM19W0XB536386	421	71816	90	11	0	17	NO	8	G	NO	: RS03196	ACTIVE
25	1999 / GMC / SAFARI TM11006	13	1GKDM19W4XB537282	422	77433	90	11	0	17	NO	8	G	NO	: RS03195	ACTIVE
26	2001 / GMC / SAFARI TM11006	13	1GKDM19W41B520232	424	97226	90	9	0	17	NO	8	G	NO	: RS04023	ACTIVE
27	2001 / GMC / SAFARI TM11006	13	1GKDM19W91B520923	425	92593	90	9	0	17	NO	8	G	NO	: RS04022	ACTIVE
28	2001 / GMC / SAFARI TM11006	13	1GKDM19W81B520234	426	52395	90	9	0	17	NO	8	G	NO	: RS04020	ACTIVE
29	2001 / GMC / SAFARI TM11006	13	1GKDM19W81B520105	427	70965	90	9	0	17	NO	8	G	NO	: RS04018	ACTIVE
30	2001 / GMC / SAFARI TM11006	13	1GKDM19W91B520761	429	66838	90	9	0	17	NO	8	G	NO	: RS04021	ACTIVE
31	2001 / GMC / SAFARI TM11006	13	1GKDM19W91B520324	430	77242	90	9	0	17	NO	8	G	NO	: RS04016	ACTIVE
32	2002 / CMD / CHEVY ASTRO VAN	13	1GNDM19XX2B150188	435	70314	90	8	0	17	NO	8	G	NO	: RS04126	ACTIVE
33	2002 / CMD / CHEVY ASTRO VAN	13	1GNDM19X12B150239	436	41617	90	8	0	17	NO	8	G	NO	: RS04127	ACTIVE
34	2002 / CMD / CHEVY ASTRO VAN	13	1GNDM19X22B150167	437	77955	90	8	0	17	NO	8	G	NO	: RS04128	ACTIVE
35	2002 / CMD / CHEVY ASTRO VAN	13	1GNDM19X62B150141	438	69906	90	8	0	17	NO	8	G	NO	: RS04129	ACTIVE
36	2002 / CMD / CHEVY ASTRO VAN	13	1GNDM19X52B150440	441	73039	90	8	0	17	NO	8	G	NO	: RS04132	ACTIVE
37	2002 / CMD / CHEVY ASTRO VAN	13	1GNDM19X22B150346	443	67648	90	8	0	17	NO	8	G	NO	: RS04134	ACTIVE
38	2002 / CMD / CHEVY ASTRO VAN	13	1GNDM19XX2B150403	445	50600	90	8	0	17	NO	8	G	NO	: RS04136	ACTIVE
39	2002 / CMD / CHEVY ASTRO VAN	13	1GNDM19X82B150027	447	63953	90	8	0	17	NO	8	G	NO	: RS04138	ACTIVE
40	2002 / CMD / CHEVY ASTRO VAN	13	1GNDM19X72B150424	450	67326	90	8	0	17	NO	8	G	NO	: RS04141	ACTIVE
41	2002 / CMD / CHEVY ASTRO VAN	13	1GNDM19X02B150216	451	46652	90	8	0	17	NO	8	G	NO	: RS04142	ACTIVE
42	2002 / CMD / CHEVY ASTRO VAN	13	1GNDM19X02B150409	452	65331	90	8	0	17	NO	8	G	NO	: RS04143	ACTIVE
43	2002 / CMD / CHEVY ASTRO VAN	13	1GNDM19X72B150858	455	67100	90	8	0	17	NO	8	G	NO	: RS04146	ACTIVE
44	2002 / CMD / CHEVY ASTRO VAN	13	1GNDM19X72B150584	457	66548	90	8	0	17	NO	8	G	NO	: RS04148	ACTIVE
45	2002 / CMD / CHEVY ASTRO VAN	13	1GNDM19X42B150994	458	42427	90	8	0	17	NO	8	G	NO	: RS04149	ACTIVE
46	2002 / CMD / CHEVY ASTRO VAN	13	1GNDM19X52B150809	459	49945	90	8	0	17	NO	8	G	NO	: RS04150	ACTIVE
47	2002 / CMD / CHEVY ASTRO VAN	13	1GNDM19X02B151091	460	37558	90	8	0	17	NO	8	G	NO	: RS04151	ACTIVE
48	2002 / CMD / CHEVY ASTRO VAN	13	1GNDM19X82B151047	461	60634	90	8	0	17	NO	8	G	NO	: RS04152	ACTIVE
49	2002 / CMD / CHEVY ASTRO VAN	13	1GNDM19X82B150951	462	40320	90	8	0	17	NO	8	G	NO	: RS04153	ACTIVE
50	2002 / CMD / CHEVY ASTRO VAN	13	1GNDM19X82B150108	463	46087	90	8	0	17	NO	8	G	NO	: RS04154	ACTIVE
51	2002 / CMD / CHEVY ASTRO VAN	13	1GNDM19X72B150410	464	61030	90	8	0	17	NO	8	G	NO	: RS04155	ACTIVE

**Appendix III**  
**Public Transportation Management System**  
**Owned Rolling Stock Inventory**  
**Agency: Kitsap Transit**  
**Date: 12/31/2010**

		VEH						REM.	REP. \$\$	ADA		FUEL	WSDOT		
	YEAR / MAKE / MODEL	CODE	V.I.N.	EQ#	LTD MILES	CONDITION	AGE	LIFE	(THOUSANDS)	ACCESS	SEATING	TYPE	TITLE (YES/NO)	LICENSE	STATUS
52	2002 / CMD / CHEVY ASTRO VAN	13	1GNDM19X52B150325	465	55902	90	8	0	17	NO	8	G	NO	RS04156	ACTIVE
53	2002 / CMD / CHEVY ASTRO VAN	13	1GNDM19X32B150310	466	52137	90	8	0	17	NO	8	G	NO	RS04157	ACTIVE
54	2002 / CMD / CHEVY ASTRO VAN	13	1GNDM19X12B150726	468	79775	90	8	0	17	NO	8	G	NO	RS04170	ACTIVE
55	2002 / CMD / CHEVY ASTRO VAN	13	1GNDM19X82B150206	470	71329	90	8	0	17	NO	8	G	NO	RS04181	ACTIVE
56	2002 / CMD / CHEVY ASTRO VAN	13	1GNDM19XX2B150658	471	70630	90	8	0	17	NO	8	G	NO	RS04182	ACTIVE
57	2002 / CMD / CHEVY ASTRO VAN	13	1GNDM19X92B150733	473	65260	90	8	0	17	NO	8	G	NO	RS04184	ACTIVE
58	2002 / CMD / CHEVY ASTRO VAN	13	1GNDM19X12B150614	474	73611	90	8	0	17	NO	8	G	NO	RS04185	ACTIVE
59	2002 / FRD / ECONOLINE RAISED ROOF	14	1FTSS34F02HB40113	500	126714	90	8	0	20	YES	6+1	D	NO	62762C	ACTIVE
60	2002 / FRD / ECONOLINE RAISED ROOF	14	1FTSS34F02HB40116	501	81992	90	8	0	45	YES	6+1	D	NO	62761C	ACTIVE
61	2002 / FRD / ECONOLINE RAISED ROOF	14	1FTSS34F02HB40119	502	99899	90	8	0	45	YES	6+1	D	NO	62760C	ACTIVE
62	2002 / FRD / ECONOLINE RAISED ROOF	14	1FTSS34F02HB40120	503	74709	90	8	0	45	YES	6+1	D	NO	62759C	ACTIVE
63	2002 / FRD / ECONOLINE RAISED ROOF	14	1FTSS34F92HB40118	504	86990	90	8	0	45	YES	6+1	D	NO	62777C	ACTIVE
64	2002 / FRD / ECONOLINE RAISED ROOF	14	1FTSS34F12HB40114	505	112951	90	8	0	45	YES	6+1	D	NO	62763C	ACTIVE
65	2002 / FRD / ECONOLINE RAISED ROOF	13	1FTSS34F32HB40115	506	124487	90	8	0	45	YES	6+1	D	NO	62765C	ACTIVE
66	2002 / FRD / ECONOLINE RAISED ROOF	13	1FTSS34F72HB40117	507	113187	90	8	0	45	YES	6+1	D	NO	62764C	ACTIVE
67	2002 / FRD / ECONOLINE RAISED ROOF	13	1FTSS34F92HB40121	508	111455	90	8	0	45	YES	6+1	D	NO	62778C	ACTIVE
68	2002 / FRD / ECONOLINE RAISED ROOF	13	1FTSS34F02HB40122	509	130458	90	8	0	45	YES	6+1	D	NO	62813C	ACTIVE
69	2002 / FRD / ECONOLINE RAISED ROOF	13	1FTSS34F22HB40123	510	95615	90	8	0	45	YES	5+1	D	NO	62814C	ACTIVE
70	2002 / FRD / ECONOLINE RAISED ROOF	13	1FTSS34F42HB40124	511	119468	90	8	0	45	YES	5+1	D	NO	62815C	ACTIVE
71	2005/FRD/ADA RAISED ROOF VAN	14	1FTSS34P06HA04314	520	37943	90	5	2	45	YES	6+1	D	NO	RS05788	ACTIVE
72	2005/FRD/ADA RAISED ROOF VAN	14	1FTSS34P26HA04315	521	39225	90	5	2	45	YES	6+1	D	NO	RS05787	ACTIVE
73	2005/FRD/ADA RAISED ROOF VAN	14	1FTSS34P46HA04316	522	112150	90	5	2	45	YES	6+1	D	NO	74393C	ACTIVE
74	2005/FRD/ADA RAISED ROOF VAN	14	1FTSS34P66HA04317	523	97382	90	5	2	45	YES	6+1	D	NO	74396C	ACTIVE
75	2005/FRD/ADA RAISED ROOF VAN	14	1FTSS34P86HA04318	524	110932	90	5	2	45	YES	6+1	D	NO	74394C	ACTIVE
76	2005/FRD/ADA RAISED ROOF VAN	14	1FTSS34PX6HA04319	525	102299	90	5	2	45	YES	6+1	D	NO	74389C	ACTIVE
77	2005/FRD/ADA RAISED ROOF VAN	14	1FTSS34P66HA04320	526	99278	90	5	2	45	YES	6+1	D	NO	74392C	ACTIVE
78	2005/FRD/ADA RAISED ROOF VAN	14	1FTSS34P86HA04321	527	108689	90	5	2	45	YES	6+1	D	NO	74390C	ACTIVE
79	2005/FRD/ADA RAISED ROOF VAN	14	1FTSS34PX6HA04322	528	103064	90	5	2	45	YES	6+1	D	NO	74397C	ACTIVE
80	2005/FRD/ADA RAISED ROOF VAN	14	1FTSS34P16HA04323	529	91746	90	5	2	45	YES	6+1	D	NO	74391C	ACTIVE
81	2004 / FRD / ECONOLINE 350 20'	13	1FDNE31P64HA55804	530	55415	90	6	1	20	NO	11	D	NO	RS04791	ACTIVE
82	2004 / FRD / ECONOLINE 350 20'	13	1FDNE31P84HA55805	531	70654	90	6	1	20	NO	11	D	NO	RS04821	ACTIVE
83	2004 / FRD / ECONOLINE 350 20'	13	1FDNE31PX4HA55806	532	53972	90	6	1	20	NO	11	D	NO	RS04801	ACTIVE
84	2004 / FRD / ECONOLINE 350 20'	13	1FDNE31P14HA55807	533	79236	90	6	1	20	NO	11	D	NO	RS04809	ACTIVE
85	2004 / FRD / ECONOLINE 350 20'	13	1FDNE31P34HA55808	534	17505	90	6	1	20	NO	11	D	NO	RS04798	ACTIVE
86	2004 / FRD / ECONOLINE 350 20'	13	1FDNE31P54HA55809	535	35749	90	6	1	20	NO	11	D	NO	RS04822	ACTIVE
87	2004 / FRD / ECONOLINE 350 20'	13	1FDNE31P14HA55810	536	76960	90	6	1	20	NO	11	D	NO	RS04799	ACTIVE
88	2004 / FRD / ECONOLINE 350 20'	13	1FDNE31P54HA55812	538	60719	90	6	1	20	NO	11	D	NO	RS04813	ACTIVE
89	2004 / FRD / ECONOLINE 350 20'	13	1FDNE31P74HA55813	539	153238	90	6	1	20	NO	11	D	NO	RS04793	ACTIVE
90	2004 / FRD / ECONOLINE 350 20'	14	1FDNE31P94HA55814	540	91581	90	6	1	20	NO	11	D	NO	RS04780	ACTIVE
91	2004 / FRD / ECONOLINE 350 20'	14	1FDNE31P04HA55815	541	30706	90	6	1	20	NO	11	D	NO	RS04810	ACTIVE
92	2004 / FRD / ECONOLINE 350 20'	14	1FDNE31P24HA55816	542	18419	90	6	1	20	NO	11	D	NO	RS04823	ACTIVE
93	2004 / FRD / ECONOLINE 350 20'	14	1FDNE31P44HA55817	543	45352	90	6	1	20	NO	11	D	NO	RS04802	ACTIVE
94	2004 / FRD / ECONOLINE 350 20'	14	1FDNE31P64HA55818	544	48333	90	6	1	20	NO	11	D	NO	RS04816	ACTIVE
95	2004 / FRD / ECONOLINE 350 20'	14	1FDNE31P84HA55819	545	36240	90	6	1	20	NO	11	D	NO	RS04819	ACTIVE
96	2004 / FRD / ECONOLINE 350 20'	14	1FDNE31P44HA55820	546	27800	90	6	1	20	NO	11	D	NO	RS04800	ACTIVE
97	2004 / FRD / ECONOLINE 350 20'	14	1FDNE31P64HA55821	547	13376	90	6	1	20	NO	11	D	NO	RS04817	ACTIVE
98	2004 / FRD / ECONOLINE 350 20'	14	1FDNE31P84HA55822	548	57725	90	6	1	20	NO	11	D	NO	RS04824	ACTIVE
99	2004 / FRD / ECONOLINE 350 20'	14	1FDNE31PX4HA55823	549	51359	90	6	1	20	NO	11	D	NO	RS04815	ACTIVE
100	2004 / FRD / ECONOLINE 350 20'	14	1FDNE31P14HA55824	550	36482	90	6	1	20	NO	11	D	NO	RS04783	ACTIVE
101	2004 / FRD / ECONOLINE 350 20'	14	1FDNE31P34HA55825	551	30179	90	6	1	20	NO	11	D	NO	RS04781	ACTIVE
102	2004 / FRD / ECONOLINE 350 20'	14	1FDNE31P54HA55826	552	25253	90	6	1	20	NO	11	D	NO	RS04814	ACTIVE
103	2004 / FRD / ECONOLINE 350 20'	14	1FDNE31P74HA55827	553	23058	90	6	1	20	NO	11	D	NO	RS04825	ACTIVE
104	2004 / FRD / ECONOLINE 350 20'	14	1FDNE31P94HA55828	554	14271	90	6	1	20	NO	11	D	NO	RS04811	ACTIVE
105	2004 / FRD / ECONOLINE 350 20'	14	1FDNE31P04HA55829	555	47508	90	6	1	20	NO	11	D	NO	RS04826	ACTIVE
106	2004 / FRD / ECONOLINE 350 20'	14	1FDNE31P74HA55830	556	37836	90	6	1	20	NO	11	D	NO	RS04807	ACTIVE
107	2004 / FRD / ECONOLINE 350 20'	14	1FDNE31P94HA55831	557	49787	90	6	1	20	NO	11	D	NO	RS04812	ACTIVE
108	2004 / FRD / ECONOLINE 350 20'	14	1FDNE31P04HA55832	558	41296	90	6	1	20	NO	11	D	NO	RS04818	ACTIVE
109	2004 / FRD / ECONOLINE 350 20'	14	1FDNE31P24HA55833	559	52478	90	6	1	20	NO	11	D	NO	RS04782	ACTIVE

Appendix III  
Public Transportation Management System  
Owned Rolling Stock Inventory  
Agency: Kitsap Transit  
Date: 12/31/2010

		VEH						REM.	REP. \$\$	ADA		FUEL	WSDOT		
	YEAR / MAKE / MODEL	CODE	V.I.N.	EQ#	LTD MILES	CONDITION	AGE	LIFE	(THOUSANDS)	ACCESS	SEATING	TYPE	TITLE (YES/NO)	LICENSE	STATUS
110	2004 / FRD / ECONOLINE 350 20'	14	1FDNE31P44HA55834	560	99482	90	6	1	20	NO	11	D	NO	: RS04784	ACTIVE
111	2004 / FRD / ECONOLINE 350 20'	14	1FDNE31P64HA55835	561	72744	90	6	1	20	NO	11	D	NO	: RS04808	ACTIVE
112	2004 / FRD / ECONOLINE 350 20'	14	1FDNE31P84HA55836	562	27423	90	6	1	20	NO	11	D	NO	: RS04828	ACTIVE
113	2004 / FRD / ECONOLINE 350 20'	14	1FDNE31PX4HA55837	563	71217	90	6	1	20	NO	11	D	NO	: RS04806	ACTIVE
114	2004 / FRD / ECONOLINE 350 20'	14	1FDSS31P74HA55838	564	46599	90	6	1	20	NO	14	D	NO	: RS04785	ACTIVE
115	2004 / FRD / ECONOLINE 350 20'	14	1FDSS31P94HA55839	565	37768	90	6	1	20	NO	14	D	NO	: RS04786	ACTIVE
116	2004 / FRD / ECONOLINE 350 20'	13	1FDSS31P54HA55840	566	123678	90	6	1	20	NO	14	D	NO	: RS04787	ACTIVE
117	2004 / FRD / ECONOLINE 350 20'	13	1FDSS31P74HA55841	567	54970	90	6	1	20	NO	14	D	NO	: RS04778	ACTIVE
118	2004 / FRD / ECONOLINE 350 20'	13	1FDSS31P94HA55842	568	72696	90	6	1	20	NO	14	D	NO	: RS04827	ACTIVE
119	2004 / FRD / ECONOLINE 350 20'	13	1FDSS31P04HA55843	569	40820	90	6	1	20	NO	14	D	NO	: RS04779	ACTIVE
120	2004 / FRD / CLUB WAGON	13	1FDNE31P04HB40749	570	82517	90	6	1	20	NO	11	D	NO	RS05098	ACTIVE
121	2004 / FRD / CLUB WAGON	13	1FDNE31P74HB40750	571	90561	90	6	1	20	NO	11	D	NO	RS05099	ACTIVE
122	2004 / FRD / CLUB WAGON	13	1FDNE31P94HB40751	572	65245	90	6	1	20	NO	11	D	NO	RS05100	ACTIVE
123	2004 / FRD / CLUB WAGON	13	1FDNE31P04HB40752	573	48684	90	6	1	20	NO	11	D	NO	RS05101	ACTIVE
124	2004 / FRD / CLUB WAGON	13	1FDNE31P24HB40753	574	44640	90	6	1	20	NO	11	D	NO	RS05102	ACTIVE
125	2004 / FRD / CLUB WAGON	13	1FDNE31P44HB40754	575	73144	90	6	1	20	NO	11	D	NO	RS05103	ACTIVE
126	2004 / FRD / CLUB WAGON	13	1FDNE31P64HB40755	576	91037	90	6	1	20	NO	11	D	NO	RS05104	ACTIVE
127	2004 / FRD / CLUB WAGON	13	1FDNE31P64HB40756	577	31823	90	6	1	20	NO	11	D	NO	RS05105	ACTIVE
128	2004 / FRD / CLUB WAGON	13	1FDNE31P84HB40757	578	70413	90	6	1	20	NO	11	D	NO	RS05106	ACTIVE
129	2004 / FRD / CLUB WAGON	13	1FDNE31P14HB40758	579	37898	90	6	1	20	NO	11	D	NO	RS05107	ACTIVE
130	2004 / FRD / CLUB WAGON	13	1FDNE31P34HB40759	580	52884	90	6	1	20	NO	11	D	NO	RS05108	ACTIVE
131	2004 / FRD / CLUB WAGON	13	1FDNE31PX4HB40760	581	54840	90	6	1	20	NO	11	D	NO	RS15109	ACTIVE
132	2004 / FRD / CLUB WAGON	13	1FDNE31P14HB40761	582	35595	90	6	1	20	NO	11	D	NO	RS05110	ACTIVE
133	2006 / FRD ECONONLINE 350 VAN 20'	13	1FDNE31PX6HA09847	583	57288	90	4	3	26	NO	11	D	YES	RS05665	ACTIVE
134	2006 / FRD ECONONLINE 350 VAN 20'	13	1FDNE31P16HA09848	584	67153	90	4	3	26	NO	11	D	YES	RS05666	ACTIVE
135	2006 / FRD ECONONLINE 350 VAN 20'	13	1FDNE31P36HA09849	585	71510	90	4	3	26	NO	11	D	YES	RS05672	ACTIVE
136	2006 / FRD ECONONLINE 350 VAN 20'	13	1FDNE31PX6HA09850	586	62083	90	4	3	26	NO	11	D	YES	RS05667	ACTIVE
137	2006 / FRD ECONONLINE 350 VAN 20'	13	1FDNE31P16HA09851	587	36671	90	4	3	26	NO	11	D	YES	RS05673	ACTIVE
138	2006 / FRD ECONONLINE 350 VAN 20'	13	1FDNE31P36HA09852	588	95897	90	4	3	26	NO	11	D	YES	RS05669	ACTIVE
139	2006 / FRD ECONONLINE 350 VAN 20'	13	1FDNE31P56HA09853	589	65085	90	4	3	26	NO	11	D	YES	RS05668	ACTIVE
140	2006 / FRD ECONONLINE 350 VAN 20'	13	1FDNE31P76HA09854	590	42780	90	4	3	26	NO	11	D	YES	RS05671	ACTIVE
141	2006 / FRD ECONONLINE 350 VAN 20'	13	1FDNE31P86HA09846	591	58592	90	4	3	26	NO	11	D	YES	RS05675	ACTIVE
142	2006 / FRD ECONONLINE 350 VAN 20'	13	1FDNE31P06HA09856	592	51869	90	4	3	26	NO	11	D	YES	RS05670	ACTIVE
143	2006 / FRD ECONONLINE 350 VAN 20'	13	1FDNE31P26HA09857	593	25548	90	4	3	26	NO	11	D	YES	RS05674	ACTIVE
144	2006 / FRD ECONONLINE 350 VAN 20'	13	1FDNE31P96HA09855	594	57574	90	4	3	26	NO	11	D	YES	RS05676	ACTIVE
145	2006 / FRD ECONONLINE 350 VAN 20'	13	1FDNE31P46HA09858	595	54135	90	4	3	26	NO	11	D	YES	RS05677	ACTIVE
146	2006 FORD E31 CLUB VAN	13	1FDNE31PX6DA36943	596	53315	90	4	3	27	NO	8	D	YES	RS06037	ACTIVE
147	2006 FORD E31 CLUB VAN	13	1FDNE31P36DA36945	597	53585	90	4	3	27	NO	8	D	YES	RS06038	ACTIVE
148	2006 FORD E31 CLUB VAN	13	1FDNE31P16DA36944	598	38628	90	4	3	27	NO	8	D	YES	RS06098	ACTIVE
149	2006 FORD E31 CLUB VAN	13	1FDNE31P86DA36942	599	29853	90	4	3	27	NO	8	D	YES	RS06099	ACTIVE
150	2006 FORD E31 CLUB VAN	13	1FDNE31P96DA36948	600	47304	90	4	3	27	NO	8	D	YES	RS06112	ACTIVE
151	2006 FORD E31 CLUB VAN	13	1FDNE31P96DA36951	601	39580	90	4	3	27	NO	8	D	YES	RS06113	ACTIVE
152	2006 FORD E31 CLUB VAN	13	1FDNE31P76DA36950	602	36950	90	4	3	27	NO	8	D	YES	RS06116	ACTIVE
153	2006 FORD E31 CLUB VAN	13	1FDNE31P76DA36947	603	38296	90	4	3	27	NO	8	D	YES	RS06114	ACTIVE
154	2006 FORD E31 CLUB VAN	13	1FDNE31P56DA36946	604	35091	90	4	3	27	NO	8	D	YES	RS06115	ACTIVE
155	2006 FORD E31 CLUB VAN	13	1FDNE31P06DA36949	605	27382	90	4	3	27	NO	8	D	YES	RS06118	ACTIVE
156	2006 FORD E31 CLUB VAN	13	1FDNE31P26DA36953	606	86295	90	4	3	27	NO	8	D	YES	RS06117	ACTIVE
157	2006 FORD E31 CLUB VAN	13	1FDNE31P46DA36954	607	36463	90	4	3	27	NO	8	D	YES	RS06120	ACTIVE
158	2006 FORD E31 CLUB VAN	13	1FDNE31P06DA36952	608	44074	90	4	3	27	NO	8	D	YES	RS06119	ACTIVE
159	2006 FORD E31 CLUB VAN	13	1FDNE31P56DB02363	609	15286	90	4	3	25	NO	8	D	NO	RS06557	ACTIVE
160	2006 FORD E31 CLUB VAN	13	1FDNE31P86DB39052	610	30942	90	4	3	30	NO	8	D	NO	RS06579	ACTIVE
161	2006 FORD E31 CLUB VAN	13	1FDNE31P46DB39050	611	36008	90	4	3	30	NO	8	D	NO	RS06578	ACTIVE
162	2006 FORD E31 CLUB VAN	13	1FDNE31P66DB39048	612	22087	90	4	3	30	NO	8	D	NO	RS06580	ACTIVE
163	2006 FORD E31 CLUB VAN	13	1FDNE31P66DB39051	613	22725	90	4	3	30	NO	8	D	NO	RS06581	ACTIVE
164	2006 FORD E31 CLUB VAN	13	1FDNE31PX6DB39053	614	16239	90	4	3	30	NO	8	D	NO	RS06582	ACTIVE
165	2006 FORD E31 CLUB VAN	13	1FDNE31P36DB39055	615	12394	90	4	3	30	NO	8	D	NO	RS06575	ACTIVE
166	2006 FORD E31 CLUB VAN	13	1FDNE31P86DB39049	616	11504	90	4	3	30	NO	8	D	NO	RS06574	ACTIVE
167	2006 FORD E31 CLUB VAN	13	1FDNE31P16DB39054	617	27492	90	4	3	30	NO	8	D	NO	RS06576	ACTIVE

**Appendix III**  
**Public Transportation Management System**  
**Owned Rolling Stock Inventory**  
**Agency: Kitsap Transit**  
**Date: 12/31/2010**

		VEH						REM.	REP. \$\$	ADA		FUEL	WSDOT		
	YEAR / MAKE / MODEL	CODE	V.I.N.	EQ#	LTD MILES	CONDITION	AGE	LIFE	(THOUSANDS)	ACCESS	SEATING	TYPE	TITLE (YES/NO)	LICENSE	STATUS
168	2006 FORD E31 CLUB VAN	13	1FDNE31P56DB39056	618	13860	90	4	3	30	NO	8	D	NO	RS06577	ACTIVE
169	2006 FORD E31 CLUB VAN	13	1FDNE31P76DB39057	619	23160	90	4	3	30	NO	8	D	NO	RS06584	ACTIVE
170	2006 FORD E31 CLUB VAN	13	1FDNE31P06DB39059	620	30980	90	4	3	30	NO	8	D	NO	RS06585	ACTIVE
171	2006 FORD E31 CLUB VAN	13	1FDNE31P96DB39058	621	27011	90	4	3	30	NO	8	D	NO	RS06583	ACTIVE
172	2008 FORD E31 CLUB VAN	13	1FDNE31L48DB40117	622	14403	90	2	3	25	NO	11	G	YES	RS07439	ACTIVE
173	2008 FORD E31 CLUB VAN	13	1FDNE31L68DB40118	623	13036	90	2	3	25	NO	11	G	YES	RS07438	ACTIVE
174	2008 FORD E31 CLUB VAN	13	1FDNE31L88DB40119	624	45979	90	2	3	25	NO	11	G	YES	RS07436	ACTIVE
175	2008 FORD E31 CLUB VAN	13	1FDNE31L48DB40120	625	19111	90	2	3	25	NO	11	G	YES	RS07440	ACTIVE
176	2008 FORD E31 CLUB VAN	13	1FDNE31L68DB40121	626	22888	90	2	3	25	NO	11	G	YES	RS07437	ACTIVE
177	2008 FORD E31 CLUB VAN	13	1FDNE31L88DB40122	627	34569	90	2	3	25	NO	11	D	NO	RS07443	ACTIVE
178	2008 FORD E31 CLUB VAN	13	1FDNE31LX8DB40123	628	31553	90	2	3	25	NO	11	D	NO	RS07442	ACTIVE
179	2008 FORD E31 CLUB VAN	13	1FDNE31L18DB40124	629	28004	90	2	3	25	NO	11	D	NO	RS07445	ACTIVE
180	2008 FORD E31 CLUB VAN	13	1FDNE31L38DB40125	630	26638	90	2	3	25	NO	11	D	NO	RS07441	ACTIVE
181	2008 FORD E31 CLUB VAN	13	1FDNE31L58DB40126	631	36732	90	2	3	25	NO	11	D	NO	RS07444	ACTIVE
182	2000 / INT / AERO ELITE 270	4	1HVBEABM71H351730	700	267609	40	10	0	110	YES	23+2	D	NO	: 56711C	ACTIVE
183	2000 / INT / AERO ELITE 270	4	1HVBEABM01H351732	701	258347	40	10	0	110	YES	23+2	D	NO	: 56712C	ACTIVE
184	2000 / INT / AERO ELITE 270	4	1HVBEABM5XH213533	702	251270	40	10	0	110	YES	23+2	D	NO	: 56713C	ACTIVE
185	2000 / INT / AERO ELITE 270	4	1HVBEABMX1H351735	703	288829	40	10	0	110	YES	23+2	D	NO	: 56717C	ACTIVE
186	2000 / INT / AERO ELITE 270	4	1HVBEABM91H351731	704	289521	40	10	0	110	YES	23+2	D	NO	: 56720C	ACTIVE
187	2000 / INT / AERO ELITE 270	4	1HVBEABM21H351733	705	266969	40	10	0	110	YES	23+2	D	NO	: 56719C	ACTIVE
188	2000 / INT / AERO ELITE 270	4	1HVBEABM11H351738	706	266021	40	10	0	110	YES	23+2	D	NO	: 56718C	ACTIVE
189	2000 / INT / AERO ELITE 270	4	1HVBEABM41H351734	707	308347	40	10	0	110	YES	23+2	D	NO	: 56721C	ACTIVE
190	2000 / INT / AERO ELITE 270	4	1HVBEABM01H351746	709	323468	40	10	0	110	YES	23+2	D	NO	: 56724C	ACTIVE
191	2000 / INT / AERO ELITE 270	4	1HVBEABMX1H351740	710	303167	40	10	0	110	YES	23+2	D	NO	: 56725C	ACTIVE
192	2000 / INT / AERO ELITE 270	4	1HVBEABM31H351739	711	244046	40	10	0	110	YES	23+2	D	NO	: 56736C	ACTIVE
193	2000 / INT / AERO ELITE 270	4	1HVBEABM71H351744	712	282055	40	10	0	110	YES	23+2	D	NO	: 56737C	ACTIVE
194	2000 / INT / AERO ELITE 270	4	1HVBEABM51H351743	713	258785	40	10	0	110	YES	23+2	D	NO	: 56738C	ACTIVE
195	2000 / INT / AERO ELITE 270	4	1HVBEABM21H351747	714	326589	40	10	0	110	YES	23+2	D	NO	: 56745C	ACTIVE
196	2000 / INT / AERO ELITE 270	4	1HVBEABM31H351742	715	287121	40	10	0	110	YES	23+2	D	NO	: 56746C	ACTIVE
197	2000 / INT / AERO ELITE 270	4	1HVBEABM41H351748	716	312826	40	10	0	110	YES	23+2	D	NO	: 56747C	ACTIVE
198	2000 / INT / AERO ELITE 270	4	1HVBEABM21H351750	717	292373	40	10	0	110	YES	23+2	D	NO	: 56755C	ACTIVE
199	2000 / INT / AERO ELITE 270	4	1HVBEABM61H351735	718	276882	40	10	0	110	YES	23+2	D	NO	: 56717C	ACTIVE
200	2000 / INT / AERO ELITE 270	4	1HVBEABM91H351745	719	294352	40	10	0	110	YES	23+2	D	NO	: 56753C	ACTIVE
201	2000 / INT / AERO ELITE 270	4	1HVBEABM61H351749	720	229801	40	10	0	110	YES	23+2	D	NO	: 56768C	ACTIVE
202	2000 / INT / AERO ELITE 270	4	1HVBEABM81H351736	721	308216	40	10	0	110	YES	23+2	D	NO	: 56754C	ACTIVE
203	2000 / INT / AERO ELITE 270	4	1HVBEABM61H360046	722	266344	40	10	0	110	YES	23+2	D	NO	: 56767C	ACTIVE
204	2003 / GIL / GILLIG 40'	1	15GDD271531111814	730	189431	90	7	5	300	YES	44+2	D	NO	: 62868C	ACTIVE
205	2003 / GIL / GILLIG 40'	1	15GDD271731111815	731	191737	90	7	5	300	YES	44+2	D	NO	: 62870C	ACTIVE
206	2003 / GIL / GILLIG 40'	1	15GDD271931111816	732	207816	90	7	5	300	YES	44+2	D	NO	: 62871C	ACTIVE
207	2003 / GIL / GILLIG 40'	1	15GDD271031111817	733	205797	90	7	5	300	YES	44+2	D	NO	: 62872C	ACTIVE
208	2003 / GIL / GILLIG 40'	1	15GDD271231111818	734	203294	90	7	5	300	YES	44+2	D	NO	: 62873C	ACTIVE
209	2003 / GIL / GILLIG 40'	1	15GDD271431111819	735	198345	90	7	5	300	YES	44+2	D	NO	: 62874C	ACTIVE
210	2003 / GIL / GILLIG 40'	1	15GDD271031111820	736	230342	90	7	5	300	YES	44+2	D	NO	: 62876C	ACTIVE
211	2003 / GIL / GILLIG 40'	1	15GDD271231111821	737	234220	90	7	5	300	YES	44+2	D	NO	: 62877C	ACTIVE
212	2003 / GIL / GILLIG 40'	1	15GDD271431111822	738	192236	90	7	5	300	YES	44+2	D	NO	: 62878C	ACTIVE
213	2003 / GIL / GILLIG 40'	1	15GDD271631111823	739	170108	90	7	5	300	YES	44+2	D	NO	: 62879C	ACTIVE
214	2003 / GIL / GILLIG 40'	1	15GDD271831111824	740	197531	90	7	5	300	YES	44+2	D	NO	: 62883C	ACTIVE
215	2003 / GIL / GILLIG 40'	1	15GDD271X31111825	741	202925	90	7	5	300	YES	44+2	D	NO	: 62885C	ACTIVE
216	2003 / GIL / GILLIG 40'	1	15GDD271131111826	742	187401	90	7	5	300	YES	44+2	D	NO	: 62886C	ACTIVE
217	2003 / GIL / GILLIG 40'	1	15GDD271331111827	743	189870	90	7	5	300	YES	44+2	D	NO	: 62887C	ACTIVE
218	2003 / GIL / GILLIG 40'	1	156DD271531111828	744	237020	90	7	5	300	YES	44+2	D	NO	: 62888C	ACTIVE
219	2003 / GIL / GILLIG 40'	1	15GDD271731111829	745	166881	90	7	5	300	YES	44+2	D	NO	: 62884C	ACTIVE
220	2003 / GIL / GILLIG 40'	1	15GDD271331111830	746	202120	90	7	5	300	YES	44+2	D	NO	: 62894C	ACTIVE
221	2003 / GIL / GILLIG 40'	1	15GDD271531111831	747	188380	90	7	5	300	YES	44+2	D	NO	: 62892C	ACTIVE
222	2003 / GIL / GILLIG 35'	2	15GGD271233073522	750	210861	90	7	5	280	YES	32+2	D	NO	: 62891C	ACTIVE
223	2003 / GIL / GILLIG 35'	2	15GGD271431073523	751	251278	90	7	5	280	YES	32+2	D	NO	: 62893C	ACTIVE
224	2004 / GIL / GILLIG LOW FLOOR 35'	2	15GGB291041074091	752	204202	90	6	6	280	YES	32+2	D	NO	: 70433C	ACTIVE
225	2004 / GIL / GILLIG LOW FLOOR 35'	2	15GGB291241074092	753	266191	90	6	6	280	YES	32+2	D	NO	: 70434C	ACTIVE

**Appendix III**  
**Public Transportation Management System**  
**Owned Rolling Stock Inventory**  
**Agency: Kitsap Transit**  
**Date: 12/31/2010**

		VEH						REM.	REP. \$\$	ADA		FUEL	WSDOT		
	YEAR / MAKE / MODEL	CODE	V.I.N.	EQ#	LTD MILES	CONDITION	AGE	LIFE	(THOUSANDS)	ACCESS	SEATING	TYPE	TITLE (YES/NO)	LICENSE	STATUS
226	2004 / GIL / GILLIG LOW FLOOR 35'	2	15GGB291441074093	754	281322	90	6	6	280	YES	32+2	D	NO	: 70435C	ACTIVE
227	2004 / GIL / GILLIG LOW FLOOR 35'	2	15GGB291641074094	755	223801	90	6	6	280	YES	32+2	D	NO	: 70436C	ACTIVE
228	2004 / GIL / GILLIG LOW FLOOR 35'	2	15GGB291841074095	756	231751	90	6	6	280	YES	32+2	D	NO	: 70437C	ACTIVE
229	2004 / GIL / GILLIG LOW FLOOR 35'	2	15GGB291X41074096	757	257317	90	6	6	280	YES	32+2	D	NO	: 70438C	ACTIVE
230	2004 / GIL / GILLIG LOW FLOOR 35'	2	15GGB291141074097	758	272120	90	6	6	280	YES	32+2	D	NO	: 70439C	ACTIVE
231	2004 / GIL / GILLIG LOW FLOOR 35'	2	15GGB291341074098	759	217031	90	6	6	280	YES	32+2	D	NO	: 70440C	ACTIVE
232	2004 / GIL / GILLIG LOW FLOOR 35'	2	15GGB291541074099	760	235629	90	6	6	280	YES	32+2	D	NO	: 70441C	ACTIVE
233	2004 / GIL / GILLIG LOW FLOOR 35'	2	15GGB291841074100	761	319166	90	6	6	280	YES	32+2	D	NO	: 70442C	ACTIVE
234	2005 / GIL / GILLIG LOW FLOOR 35'	2	15GGB291851074101	762	208416	90	5	7	280	YES	32+2	D	NO	74334C	ACTIVE
235	2005 / GIL / GILLIG LOW FLOOR 35'	2	15GGB291X51074102	763	193025	90	5	7	280	YES	32+2	D	NO	74335C	ACTIVE
236	2005 / GIL / GILLIG LOW FLOOR 35'	2	15GGB291151074103	764	252720	90	5	7	280	YES	32+2	D	NO	74336C	ACTIVE
237	2005 / GIL / GILLIG LOW FLOOR 35'	2	15GGB291351074104	765	203943	90	5	7	280	YES	32+2	D	NO	74337C	ACTIVE
238	2005 / GIL / GILLIG LOW FLOOR 35'	2	15GGB291551074105	766	235519	90	5	7	280	YES	32+2	D	NO	74338C	ACTIVE
239	2004 / GIL / GILLIG LOW FLOOR 40'	1	15GGB291641074106	770	240993	90	6	6	290	YES	38+2	D	NO	: 70428C	ACTIVE
240	2004 / GIL / GILLIG LOW FLOOR 40'	1	15GGB291841074107	771	268510	90	6	6	290	YES	38+2	D	NO	: 70429C	ACTIVE
241	2004 / GIL / GILLIG LOW FLOOR 40'	1	15GGB291X41078108	772	286222	90	6	6	290	YES	38+2	D	NO	: 70430C	ACTIVE
242	2004 / GIL / GILLIG LOW FLOOR 40'	1	15GGB291141074109	773	208098	90	6	6	290	YES	38+2	D	NO	: 70431C	ACTIVE
243	2004 / GIL / GILLIG LOW FLOOR 40'	1	15GGB291841074110	774	185079	90	6	6	290	YES	38+2	D	NO	: 70443C	ACTIVE
244	2005 / GIL / GILLIG LOW FLOOR 40'	1	15GGD291851074111	775	226960	90	5	7	280	YES	38+2	D	NO	74339C	ACTIVE
245	2005 / GIL / GILLIG LOW FLOOR 40'	1	15GGD291X51074112	776	245119	90	5	7	280	YES	38+2	D	NO	74340C	ACTIVE
246	2005 / GIL / GILLIG LOW FLOOR 40'	1	15GGD291151074113	777	210178	90	5	7	280	YES	38+2	D	NO	74341C	ACTIVE
247	2005 / GIL / GILLIG LOW FLOOR 40'	1	15GGD291351074114	778	175991	90	5	7	280	YES	38+2	D	NO	74342C	ACTIVE
248	2005 / GIL / GILLIG LOW FLOOR 40'	1	15GGD291551074115	779	197529	90	5	7	280	YES	38+2	D	NO	74343C	ACTIVE
249	1987 / BIA / ORION 30' 810-817	3	2B1119277H6001613	810	907855	40	23	0	275	YES	31+3	D	NO	: 01893C	ACTIVE
250	1987 / BIA / ORION 30' 810-817	3	2B1119270H6001632	811	893547	40	23	0	275	YES	31+3	D	NO	: 01892C	ACTIVE
251	1987 / BIA / ORION 30' 810-817	3	2B1119272H6001633	812	934368	40	23	0	275	YES	31+3	D	NO	: 01894C	ACTIVE
252	1987 / BIA / ORION 30' 810-817	3	2B1119274H6001634	813	890745	40	23	0	275	YES	31+3	D	NO	: 01895C	ACTIVE
253	1987 / BIA / ORION 30' 810-817	3	2B1119276H6001635	814	868767	40	23	0	275	YES	31+3	D	NO	: 01896C	ACTIVE
254	1987 / BIA / ORION 30' 810-817	3	2B1119278H6001636	815	926023	40	23	0	275	YES	31+3	D	NO	: 01897C	ACTIVE
255	1987 / BIA / ORION 30' 810-817	3	2B111927XH6001637	816	880961	40	23	0	275	YES	31+3	D	NO	: 01898C	ACTIVE
256	1987 / BIA / ORION 30' 810-817	3	2B1119271H6001638	817	909672	40	23	0	275	YES	31+3	D	NO	: 01899C	ACTIVE
257	1983 / GIL / GILLIG 40'	1	15GCD0818D1080464	840	223508	60	27	0	300	YES	38+2	D	NO	: 43535C	ACTIVE
258	1983 / GIL / GILLIG 40'	1	15GCD0818D1080469	841	350439	60	27	0	295	YES	41+2	D	NO	: 43536C	ACTIVE
259	1983 / GIL / GILLIG 40'	1	15GCD0818D1080472	842	418918	60	27	0	295	YES	41+2	D	NO	: 43537C	ACTIVE
260	1983 / GIL / GILLIG 40'	1	15GCD0818D1080474	843	49178	60	27	0	300	NO	47	D	NO	: 38620C	ACTIVE
261	1983 / GIL / GILLIG 40'	1	15GCD0818D1080475	844	378463	60	27	0	295	YES	41+2	D	NO	: 43538C	ACTIVE
262	1983 / GIL / GILLIG 40'	1	15GCD0818D1080477	845	341721	60	27	0	295	YES	41+2	D	NO	: 43539C	ACTIVE
263	1983 / GIL / GILLIG 40'	1	15GCD0818D1080479	846	291731	60	27	0	300	YES	38+2	D	NO	: 43540C	ACTIVE
264	1983 / GIL / GILLIG 40'	1	15GCD0818D1080484	847	337108	60	27	0	295	YES	41+2	D	NO	: 38619C	ACTIVE
265	1983 / GIL / GILLIG 40'	1	15GCD0811D1080485	848	190471	60	27	0	300	YES	38+2	D	NO	: 38648C	ACTIVE
266	1983 / GIL / GILLIG 40'	1	15GCD0818D1080486	849	204180	60	27	0	300	YES	38+2	D	NO	: 43541C	ACTIVE
267	1983 / GIL / GILLIG 40'	1	15GCD0818D1080488	850	236300	60	27	0	300	YES	38+2	D	NO	: 43542C	ACTIVE
268	1983 / GIL / GILLIG 40'	1	15GCD0818D1080491	851	259663	60	27	0	300	YES	38+2	D	NO	: 43543C	ACTIVE
269	1983 / GIL / GILLIG 40'	1	15GCD0818D1080493	852	235170	60	27	0	300	YES	38+2	D	NO	: 43544C	ACTIVE
270	1983 / GIL / GILLIG 40'	1	15GCD0818D1080495	853	229663	60	27	0	300	YES	38+2	D	NO	: 43545C	ACTIVE
271	1983 / GIL / GILLIG 40'	1	15GCD0818D1080503	854	212658	60	27	0	300	YES	38+2	D	NO	: 43546C	ACTIVE
272	1983 / GIL / GILLIG 40'	1	15GCD0818D1080507	855	235991	60	27	0	300	YES	38+2	D	NO	: 43547C	ACTIVE
273	1983 / GIL / GILLIG 40'	1	15GCD0818D1080509	856	229332	60	27	0	300	YES	38+2	D	NO	: 43548C	ACTIVE
274	1983 / GIL / GILLIG 40'	1	15GCD0818D1080512	857	234308	60	27	0	300	YES	38+2	D	NO	: 43549C	ACTIVE
275	1983 / GIL / GILLIG 40'	1	15GCD0818D1080514	858	247809	60	27	0	300	YES	38+2	D	NO	: 43550C	ACTIVE
276	1983 / GIL / GILLIG 40'	1	15GCD0818D1080517	859	198744	60	27	0	300	YES	38+2	D	NO	: 43551C	ACTIVE
277	1983 / GIL / GILLIG 40'	1	15GCD0818D1080518	860	244560	60	27	0	300	YES	38+2	D	NO	: 43552C	ACTIVE
278	1983 / GIL / GILLIG 40'	1	15GCD0818D1080526	861	233265	60	27	0	300	YES	38+2	D	NO	: 43553C	ACTIVE
279	1983 / GIL / GILLIG 35'	2	15GCD0818D1080530	862	315759	60	27	0	285	YES	37+2	D	NO	: 43530C	ACTIVE
280	1983 / GIL / GILLIG 35'	2	15GCD0818D1080533	863	392062	60	27	0	285	YES	37+2	D	NO	: 43531C	ACTIVE
281	1983 / GIL / GILLIG 35'	2	15GCD0818D1080535	865	328220	60	27	0	285	YES	37+2	D	NO	: 43532C	ACTIVE
282	1983 / GIL / GILLIG 35'	2	15GCD0818D1080543	866	283029	60	27	0	285	YES	37+2	D	NO	: 43533C	ACTIVE
283	1983 / GIL / GILLIG 35'	2	15GCD0818D1080559	867	312679	60	27	0	285	YES	37+2	D	NO	: 43534C	ACTIVE

**Appendix III**  
**Public Transportation Management System**  
**Owned Rolling Stock Inventory**  
**Agency: Kitsap Transit**  
**Date: 12/31/2010**

		VEH						REM.	REP. \$\$	ADA		FUEL	WSDOT		
	YEAR / MAKE / MODEL	CODE	V.I.N.	EQ#	LTD MILES	CONDITION	AGE	LIFE	(THOUSANDS)	ACCESS	SEATING	TYPE	TITLE (YES/NO)	LICENSE	STATUS
284	1983 / GIL / GILLIG 35'	2	15GCD0818D1080562	868	280601	60	27	0	285	YES	37+2	D	NO	: 43554C	ACTIVE
285	1983 / GIL / GILLIG 35'	2	15GCD0818D1080567	869	288605	60	27	0	285	YES	37+2	D	NO	: 43529C	ACTIVE
286	1987 / BIA / ORION 871-876	3	2701 2B1119774H6001559	871	272442	40	23	0	275	YES	28+2	D	NO	: 44573C	ACTIVE
287	1987 / BIA / ORION 871-876	3	2702 2B1119772H6001561	872	178268	40	23	0	275	YES	28+2	D	NO	: 44577C	ACTIVE
288	1987 / BIA / ORION 871-876	3	2703 2B1119772H6001562	873	202318	40	23	0	275	YES	28+2	D	NO	: 44596C	INACTIVE
289	1987 / BIA / ORION 871-876	3	2704 2B1119775H6001568	874	320339	40	23	0	275	YES	28+2	D	NO	: 44575C	ACTIVE
290	1987 / BIA / ORION 871-876	3	2705 2B1119777H6001569	875	162010	40	23	0	275	YES	28+2	D	NO	: 44576C	ACTIVE
291	1987 / BIA / ORION 871-876	3	2706 2B1119773H6001570	876	130554	40	23	0	275	YES	28+2	D	NO	: 44574C	ACTIVE
292	1988 / GIL / GILLIG 35'	2	15GCB0917J1082266	880	507651	40	22	0	285	NO	38	D	NO	: 62709C	ACTIVE
293	1988 / GIL / GILLIG 35'	2	15GCB091XJ1082276	881	497646	40	22	0	285	NO	38	D	NO	: 62708C	ACTIVE
294	1988 / GIL / GILLIG 35'	2	15GCB0913J1082278	882	512533	40	22	0	285	NO	38	D	NO	: 62733C	ACTIVE
295	1988 / GIL / GILLIG 35'	2	15GCB0911J1082263	883	470893	40	22	0	285	NO	38	D	NO	: 62710C	ACTIVE
296	1988 / GIL / GILLIG 35'	2	15GCB0910J1082271	884	851835	40	22	0	285	NO	38	D	NO	: 62711C	ACTIVE
297	1984 / GIL / GILLIG 40'	1	15GCD0817E1080818	885	691564	40	26	0	300	NO	45	D	NO	: 62712C	ACTIVE
298	1984 / GIL / GILLIG 40'	1	15GCD0818E1080822	886	608209	40	26	0	300	NO	45	D	NO	: 62734C	ACTIVE
299	1984 / GIL / GILLIG 40'	1	15GCD0819E1080819	887	804301	40	26	0	300	NO	45	D	NO	: 62731C	ACTIVE
300	1984 / GIL / GILLIG 40'	1	15GCD0811E1080824	888	810887	40	26	0	300	NO	38	D	NO	: 62730C	ACTIVE
301	1984 / GIL / GILLIG 40'	1	15GCD081XE1080823	889	571738	40	26	0	300	NO	38	D	NO	: 62732C	ACTIVE
302	1999 / FRD / E450 SUPER DUTY	4	1FDXE40F6XHC10346	920	334975	25	11	0	90	YES	13+3	D	NO	: RS03285	ACTIVE
303	1999 / FRD / E450 SUPER DUTY	4	1FDXE40F3XHC10353	927	326341	25	11	0	90	YES	13+3	D	NO	: RS03278	ACTIVE
304	1999 / FRD / E450 SUPER DUTY	4	1FDXE40FXXHC04713	943	329385	25	11	0	90	YES	13+3	D	NO	: RS03334	ACTIVE
305	1999 / FRD / E450 SUPER DUTY	4	1FDXE40F7XHC04717	947	318112	25	11	0	90	YES	13+3	D	NO	: RS03337	ACTIVE
306	2002 / FRD / ELDORADO AEROTECH 22'	4	1FDXE45F22HB59235	955	271947	80	8	0	90	YES	10+2	D	NO	: 62796C	ACTIVE
307	2002 / FRD / ELDORADO AEROTECH 22'	4	1FDXE45F42HB59236	956	287704	80	8	0	90	YES	10+2	D	NO	: 62797C	ACTIVE
308	2002 / FRD / ELDORADO AEROTECH 22'	4	1FDXE45F62HB59237	957	282700	80	8	0	90	YES	10+2	D	NO	: 62798C	ACTIVE
309	2002 / FRD / ELDORADO AEROTECH 22'	4	1FDXE45F82HB59238	958	269592	80	8	0	90	YES	10+2	D	NO	: 62799C	ACTIVE
310	2002 / FRD / ELDORADO AEROTECH 22'	4	1FDXE45F22HB59239	959	273143	80	8	0	90	YES	10+2	D	NO	: 62800C	ACTIVE
311	2002 / FRD / ELDORADO AEROTECH 22'	4	1FDXE45F62HB59240	960	288015	80	8	0	90	YES	10+2	D	NO	: 62810C	ACTIVE
312	2002 / FRD / ELDORADO AEROTECH 22'	4	1FDXE45F82HB59241	961	278779	80	8	0	90	YES	10+2	D	NO	: 62809C	ACTIVE
313	2002 / FRD / ELDORADO AEROTECH 22'	4	1FDXE45F22HB59242	962	285089	80	8	0	90	YES	10+2	D	NO	: 62830C	ACTIVE
314	2002 / FRD / ELDORADO AEROTECH 22'	4	1FDXE45F12HB59243	963	282695	80	8	0	90	YES	10+2	D	NO	: 62808C	ACTIVE
315	2002 / FRD / ELDORADO AEROTECH 22'	4	1FDXE45F32HB59244	964	276641	80	8	0	90	YES	10+2	D	NO	: 62820C	ACTIVE
316	2002 / FRD / ELDORADO AEROTECH 22'	4	1FDXE45F52HB59245	965	271420	80	8	0	90	YES	10+2	D	NO	: 62812C	ACTIVE
317	2002 / FRD / ELDORADO AEROTECH 22'	4	1FDXE45F72HB59246	966	282667	80	8	0	90	YES	10+2	D	NO	: 62811C	ACTIVE
318	2002 / FRD / ELDORADO AEROTECH 22'	4	1FDXE45F92HB59247	967	296549	80	8	0	90	YES	10+2	D	NO	: 62807C	ACTIVE
319	2002 / FRD / ELDORADO AEROTECH 22'	4	1FDXE45F02HB59248	968	266141	80	8	0	90	YES	10+2	D	NO	: 62821C	ACTIVE
320	2002 / FRD / ELDORADO AEROTECH 22'	4	1FDXE45F22HB59256	969	287920	80	8	0	90	YES	10+2	D	NO	: 62831C	ACTIVE
321	2003 / FRD / ELDORADO AEROTECH 26'	4	1FDXE45F33HB39285	970	149759	80	7	0	95	YES	21+2	D	NO	: 67035C	ACTIVE
322	2003 / FRD / ELDORADO AEROTECH 26'	4	1FDXE45F53HB39286	971	148061	80	7	0	95	YES	21+2	D	NO	: 67036C	ACTIVE
323	2002 / FRD / ELDORADO AEROTECH 24'	4	1FDXE45F72HB75835	975	274660	80	8	0	110	YES	16+2	D	NO	: 62825C	ACTIVE
324	2002 / FRD / ELDORADO AEROTECH 24'	4	1FDXE45F92HB75836	976	272242	80	8	0	110	YES	16+2	D	NO	: 62827C	ACTIVE
325	2002 / FRD / ELDORADO AEROTECH 24'	4	1FDXE45F02HB75837	977	265893	80	8	0	110	YES	16+2	D	NO	: 62828C	ACTIVE
326	2002 / FRD / ELDORADO AEROTECH 24'	4	1FDXE45F22HB75838	978	275817	80	8	0	110	YES	16+2	D	NO	: 62826C	ACTIVE
327	2003 / FRD / ELDORADO AEROTECH 26'	4	1FDXE45FX3HB39283	979	254930	80	7	0	110	YES	21+2	D	NO	: 67037C	ACTIVE
328	2003 / FRD / ELDORADO AEROTECH 26'	4	1FDXE45F13HB39284	980	276669	80	7	0	110	YES	21+2	D	NO	: 67038C	ACTIVE
329	2008 /FRD/ STARTRANS SENATOR 22'	4	1FD4E45P68DA65497	1000	84998	90	2	3	81	YES	6+3	D	NO	: 86755C	ACTIVE
330	2008 /FRD/ STARTRANS SENATOR 22'	4	1FD4E45P88DA65498	1001	81874	90	2	3	81	YES	6+3	D	NO	: 86759C	ACTIVE
331	2008 /FRD/ STARTRANS SENATOR 22'	4	1FD4E45PX8DA65499	1002	83031	90	2	3	81	YES	6+3	D	NO	: 86763C	ACTIVE
332	2008 /FRD/ STARTRANS SENATOR 22'	4	1FD4E45P28DA65500	1003	79725	90	2	3	81	YES	6+3	D	NO	: 86757C	ACTIVE
333	2008 /FRD/ STARTRANS SENATOR 22'	4	1FD4E45P48DA65501	1004	78683	90	2	3	81	YES	6+3	D	NO	: 86764C	ACTIVE
334	2008 /FRD/ STARTRANS SENATOR 22'	4	1FD4E45P68DA65502	1005	88524	90	2	3	81	YES	6+3	D	NO	: 86754C	ACTIVE
335	2008 /FRD/ STARTRANS SENATOR 22'	4	1FD4E45P88DA65503	1006	82033	90	2	3	81	YES	6+3	D	NO	: 86760C	ACTIVE
336	2008 /FRD/ STARTRANS SENATOR 22'	4	1FD4E45PX8DA65504	1007	84969	90	2	3	81	YES	6+3	D	NO	: 86765C	ACTIVE
337	2008 /FRD/ STARTRANS SENATOR 22'	4	1FD4E45P18DA65505	1008	75292	90	2	3	81	YES	6+3	D	NO	: 86766C	ACTIVE
338	2008 /FRD/ STARTRANS SENATOR 22'	4	1FD4E45P38DA65506	1009	78826	90	2	3	81	YES	6+3	D	NO	: 86761C	ACTIVE
339	2008 /FRD/ STARTRANS SENATOR 22'	4	1FD4E45P58DA65507	1010	82710	90	2	3	81	YES	6+3	D	NO	: 86767C	ACTIVE
340	2008 /FRD/ STARTRANS SENATOR 22'	4	1FD4E45P78DA65508	1011	76354	90	2	3	81	YES	6+3	D	NO	: 86768C	ACTIVE
341	2008 /FRD/ STARTRANS SENATOR 22'	4	1FD4E45P98DA65509	1012	79413	90	2	3	81	YES	6+3	D	NO	: 86762C	ACTIVE

Appendix III  
Public Transportation Management System  
Owned Rolling Stock Inventory  
Agency: Kitsap Transit  
Date: 12/31/2010

		VEH						REM.	REP. \$\$	ADA		FUEL	WSDOT		
	YEAR / MAKE / MODEL	CODE	V.I.N.	EQ#	LTD MILES	CONDITION	AGE	LIFE	(THOUSANDS)	ACCESS	SEATING	TYPE	TITLE	LICENSE	STATUS
342	2008 /FRD/ STARTTRANS SENATOR 22'	4	1FD4E45P58DA65510	1013	83173	90	2	3	81	YES	6 +3	D	NO	86758C	ACTIVE
343	2008 /FRD/ STARTTRANS SENATOR 22'	4	1FD4E45P78DA65511	1014	80180	90	2	3	81	YES	6 +3	D	NO	86756C	ACTIVE
344	2009 /FRD/SENTTOR BUS 14"	4	1FD4E45P29DA39506	1015	48453	90	1	4	94	YES	12+2	D	NO	91641C	ACTIVE
345	2009 /FRD/SENTTOR BUS 14"	4	1FD4E45P49DA39507	1016	49512	90	1	4	94	YES	12+2	D	NO	91631C	ACTIVE
346	2009 /FRD/SENTTOR BUS 14"	4	1FD4E45P69DA39508	1017	47326	90	1	4	94	YES	12+2	D	NO	91640C	ACTIVE
347	2009 /FRD/SENTTOR BUS 14"	4	1FD4E45P89DA39509	1018	50364	90	1	4	94	YES	12+2	D	NO	91633C	ACTIVE
348	2009 /FRD/SENTTOR BUS 14"	4	1FD4E45P49DA39510	1019	47596	90	1	4	94	YES	12+2	D	NO	91627C	ACTIVE
349	2009 /FRD/SENTTOR BUS 14"	4	1FD4E45P69DA39511	1020	38081	90	1	4	94	YES	12+2	D	NO	91630C	ACTIVE
350	2009 /FRD/SENTTOR BUS 14"	4	1FD4E45P89DA39512	1021	48634	90	1	4	94	YES	12+2	D	NO	91642C	ACTIVE
351	2009 /FRD/SENTTOR BUS 14"	4	1FD4E45P9DA39513	1022	44667	90	1	4	94	YES	12+2	D	NO	91643C	ACTIVE
352	2009 /FRD/SENTTOR BUS 14"	4	1FD4E45P19DA39514	1023	45561	90	1	4	94	YES	12+2	D	NO	91639C	ACTIVE
353	2009 /FRD/SENTTOR BUS 14"	4	1FD4E45P39DA39515	1024	48932	90	1	4	94	YES	12+2	D	NO	91628C	ACTIVE
354	2009 /FRD/SENTTOR BUS 14"	4	1FD4E45P59DA39516	1025	45896	90	1	4	94	YES	12+2	D	NO	91629C	ACTIVE
355	2009 FORD SENTOR BUS 17'	4	1FD4E45P79DA39503	1026	12252	90	1	4	98	YES	16+2	D	NO	91632C	ACTIVE
356	2009 FORD SENTOR BUS 17'	4	1FD4E45P99DA39504	1027	18830	90	1	4	98	YES	16+2	D	NO	91626C	ACTIVE
357	2009 FORD SENTOR BUS 17'	4	1FD4E45P09DA39505	1028	17184	90	1	4	98	YES	16+2	D	NO	91638C	ACTIVE
358	2010 TOYOTA SIENNA VAN	13	5TDKK4CC0AS302676	2000	5665	90	1	3	22	NO	8	G	NO	RS08104	ACTIVE
359	2010 TOYOTA SIENNA VAN	13	5TDKK4CC5AS303127	2001	9609	90	1	3	22	NO	8	G	NO	RS08105	ACTIVE
360	2010 TOYOTA SIENNA VAN	13	5TDKK4CC3AS303174	2002	15892	90	1	3	22	NO	8	G	NO	RS08106	ACTIVE
361	2010 TOYOTA SIENNA VAN	13	5TDKK4CC6AS303282	2003	11527	90	1	3	22	NO	8	G	NO	RS08107	ACTIVE
362	2010 TOYOTA SIENNA VAN	13	5TDKK4CC3AS303353	2004	7434	90	1	3	22	NO	8	G	NO	RS08108	ACTIVE
363	2010 TOYOTA SIENNA VAN	13	5TDKK4CC5AS303404	2005	9493	90	1	3	22	NO	8	G	NO	RS08109	ACTIVE
364	2010 TOYOTA SIENNA VAN	13	5TDKK4CC3AS302820	2006	8793	90	1	3	22	NO	8	G	NO	RS08099	ACTIVE
365	2010 TOYOTA SIENNA VAN	13	5TDKK4CCXAS302992	2007	13021	90	1	3	22	NO	8	G	NO	RS08098	ACTIVE
366	2010 TOYOTA SIENNA VAN	13	5TDKK4CC7AS303114	2008	11302	90	1	3	22	NO	8	G	NO	RS08100	ACTIVE
367	2010 TOYOTA SIENNA VAN	13	5TDKK4CC8AS303316	2009	11078	90	1	3	22	NO	8	G	NO	RS08101	ACTIVE
368	2010 TOYOTA SIENNA VAN	13	5TDKK4CC6AS303573	2010	8592	90	1	3	22	NO	8	G	NO	RS08102	ACTIVE
369	2010 TOYOTA SIENNA VAN	13	5TDKK4CC2AS303697	2011	17092	90	1	3	22	NO	8	G	NO	RS08103	ACTIVE
370	2010 TOYOTA SIENNA VAN	13	5TDKK4CC0AS303522	2012	2012	90	1	3	22	NO	8	G	NO	RS08097	ACTIVE
371	2010 TOYOTA SIENNA VAN	13	5TDKK4CC9AS302983	2013	22639	90	1	3	22	NO	8	G	NO	RS08096	ACTIVE
372	2010 TOYOTA SIENNA VAN	13	5TDKK4CC9AS303535	2014	13993	90	1	3	22	NO	8	G	NO	RS08095	ACTIVE
373	2010 TOYOTA SIENNA VAN	13	5TDKK4CC6AS303671	2015	2015	90	1	3	22	NO	8	G	NO	RS08094	ACTIVE
374	2010 TOYOTA SIENNA VAN	13	5TDKK4CC1AS303772	2016	11971	90	1	3	22	NO	8	G	NO	RS08093	ACTIVE
375	2010 TOYOTA SIENNA VAN	13	5TDKK4CC7AS303811	2017	11461	90	1	3	22	NO	8	G	NO	RS08110	ACTIVE
376	2010 TOYOTA SIENNA VAN	13	5TDKK4CC7AS304053	2018	10844	90	1	3	22	NO	8	G	NO	RS08140	ACTIVE
377	2010 TOYOTA SIENNA VAN	13	5TDKK4CC5AS304231	2019	23300	90	1	3	22	NO	8	G	NO	RS08139	ACTIVE
378	2010 TOYOTA SIENNA VAN	13	5TDKK4CCXAS304242	2020	10889	90	1	3	22	NO	8	G	NO	RS08138	ACTIVE
379	2010 TOYOTA SIENNA VAN	13	5TDKK4CC9AS304250	2021	13124	90	1	3	22	NO	8	G	NO	RS08137	ACTIVE
380	2010 TOYOTA SIENNA VAN	13	5TDKK4CC4AS304270	2022	9751	90	1	3	22	NO	8	G	NO	RS08136	ACTIVE
381	2010 TOYOTA SIENNA VAN	13	5TDKK4CC0AS304279	2023	13819	90	1	3	22	NO	8	G	NO	RS08135	ACTIVE
382	2010 TOYOTA SIENNA VAN	13	5TDKK4CC1AS301410	2024	8264	90	1	3	22	NO	8	G	NO	RS08141	ACTIVE
383	2010 TOYOTA SIENNA VAN	13	5TDKK4CC8AS301372	2025	22616	90	1	3	22	NO	8	G	NO	RS08142	ACTIVE
384	2010 TOYOTA SIENNA VAN	13	5TDKK4CC0AS301558	2026	14448	90	1	3	22	NO	8	G	NO	RS08143	ACTIVE
385	2010 TOYOTA SIENNA VAN	13	5TDKK4CC9AS301722	2027	8391	90	1	3	22	NO	8	G	NO	RS08144	ACTIVE
386	2010 TOYOTA SIENNA VAN	13	5TDKK4CC2AS304185	2028	7115	90	1	3	22	NO	8	G	NO	RS08145	ACTIVE
387	2010 TOYOTA SIENNA VAN	13	5TDKK4CC7AS301363	2029	8587	90	1	3	22	NO	8	G	NO	RS08146	ACTIVE
388	2010 TOYOTA SIENNA VAN	13	5TDKK4CC2AS301934	2030	11529	90	1	3	22	NO	8	G	NO	RS08129	ACTIVE
389	2010 TOYOTA SIENNA VAN	13	5TDKK4CC6AS302200	2031	11975	90	1	3	22	NO	8	G	NO	RS08130	ACTIVE
390	2010 TOYOTA SIENNA VAN	13	5TDKK4CC8AS301419	2032	8150	90	1	3	22	NO	8	G	NO	RS 8131	ACTIVE
391	2010 TOYOTA SIENNA VAN	13	5TDKK4CCXAS302460	2033	8897	90	1	3	22	NO	8	G	NO	RS 8132	ACTIVE
392	2010 TOYOTA SIENNA VAN	13	5TDKK4CC5AS301622	2034	14337	90	1	3	22	NO	8	G	NO	RS 8133	ACTIVE
393	2010 TOYOTA SIENNA VAN	13	5TDKK4CC2AS301707	2035	15985	90	1	3	22	NO	8	G	NO	RS08134	ACTIVE
394	2010 TOYOTA SIENNA VAN	13	5TDKK4CCXAS301440	2036	14606	90	1	3	22	NO	8	G	NO	RS08149	ACTIVE
395	2010 TOYOTA SIENNA VAN	13	5TDKK4CC2AD302470	2037	9612	90	1	3	22	NO	8	G	NO	RS08150	ACTIVE
396	2010 TOYOTA SIENNA VAN	13	5TDKK4CC5AS302706	2038	21799	90	1	3	22	NO	8	G	NO	RS08151	ACTIVE
397	2010 TOYOTA SIENNA VAN	13	5TDKK4CC7AS302626	2039	13206	90	1	3	22	NO	8	G	NO	RS08152	ACTIVE
398	2010 TOYOTA SIENNA VAN	13	5TDKK4CC5AS301989	2040	8825	90	1	3	22	NO	8	G	NO	RS08153	ACTIVE
399	2010 TOYOTA SIENNA VAN	13	5TDKK4CC6AS301998	2041	11211	90	1	3	22	NO	8	G	NO	RS08154	ACTIVE

Appendix III  
Public Transportation Management System  
Owned Rolling Stock Inventory  
Agency: Kitsap Transit  
Date: 12/31/2010

		VEH						REM.	REP. \$\$	ADA		FUEL	WSDOT		
	YEAR / MAKE / MODEL	CODE	V.I.N.	EQ#	LTD MILES	CONDITION	AGE	LIFE	(THOUSANDS)	ACCESS	SEATING	TYPE	TITLE (YES/NO)	LICENSE	STATUS
400	2010 TOYOTA SIENNA VAN	13	5TDKK4CC8AS301971	2042	8006	90	1	3	22	NO	8	G	NO	RS08155	ACTIVE
401	2010 TOYOTA SIENNA VAN	13	5TDKK4CC6AS302567	2043	14096	90	1	3	22	NO	8	G	NO	RS08156	ACTIVE
402	2010 TOYOTA SIENNA VAN	13	5TDKK4CC3AS302686	2044	8866	90	1	3	22	NO	8	G	NO	RS 08157	ACTIVE
403	2010 TOYOTA SIENNA VAN	13	5TDKK4CC8AS302747	2045	12784	90	1	3	22	NO	8	G	NO	RS 08158	ACTIVE
404	2009 FORD350 VAN	13	1FDSS31L59DA86680	2100	14615	90	1	3	28	NO	14	G	NO	RS08165	ACTIVE
405	2009 FORD 350 VAN	13	1FDSS31L09DA86683	2101	24560	90	1	3	28	NO	14	G	NO	RS08166	ACTIVE
406	2009 FORD 350 VAN	13	1FDSS31L99DA86679	2102	15128	90	1	3	28	NO	14	G	NO	RS08164	ACTIVE
407	2009 FORD 350 VAN	13	1FDSS31L79DA86681	2103	16652	90	1	3	28	NO	14	G	NO	RS08163	ACTIVE
408	2009 FORD 350 VAN	13	1FDSS31LX9DA86688	2104	18454	90	1	3	28	NO	14	G	NO	RS08167	ACTIVE
409	2009 FORD 350 VAN	13	1FDSS31L89DA86677	2105	14782	90	1	3	28	NO	14	G	NO	RS08173	ACTIVE
410	2009 FORD 350 VAN	13	1FDSS31L89DA86687	2106	26669	90	1	3	28	NO	14	G	NO	RS08176	ACTIVE
411	2009 FORD 350 VAN	13	1FDSS31L69DA86686	2107	11480	90	1	3	28	NO	14	G	NO	RS08180	ACTIVE
412	2009 FORD 350 VAN	13	1FDSS31L89DA86690	2108	8044	90	1	3	28	NO	14	G	NO	RS08177	ACTIVE
413	2009 FORD 350 VAN	13	1FDSS31L29DA86684	2109	3886	90	1	3	28	NO	14	G	NO	RS08175	ACTIVE
414	2009 FORD 350 VAN	13	1FDSS31L79DA86678	2110	8734	90	1	3	28	NO	14	G	NO	RS08184	ACTIVE
415	2009 FORD 350 VAN	13	1FDSS31L39DA86676	2111	15942	90	1	3	28	NO	14	G	NO	RS 08183	ACTIVE
416	2009 FORD 350 VAN	13	1FDSS31L39DA86693	2112	7395	90	1	3	28	NO	14	G	NO	RS 0811	ACTIVE
417	2009 FORD 350 VAN	13	1FDSS31L59DA86694	2113	6158	90	1	3	28	NO	14	G	NO	RS08188	ACTIVE
418	2009 FORD 350 VAN	13	1FDSS31L49DA86685	2114	515	90	1	3	28	NO	14	G	NO	RS08189	ACTIVE
419	2009 FORD 350 VAN	13	1FDSS31LX9DA86691	2115	93	90	1	3	28	NO	14	G	NO	RS 08190	ACTIVE
420	2009 FORD 350 VAN	13	1FDNE31L19DA86692	2116	9900	90	1	3	28	NO	14	G	NO	RS08194	ACTIVE
421	2009 FORD 350 VAN	13	1FDSS31L19DA86689	2117	12262	90	1	3	28	NO	14	G	NO	RS08193	ACTIVE
422	2009 FORD 350 VAN	13	1FDSS31L99DA86692	2118	53	90	1	3	28	NO	14	G	NO	RS08217	ACTIVE
423	2009 FORD 350 VAN	13	1FDNE31L39DA86665	2119	29266	90	1	3	26	NO	11	G	NO	RS08187	ACTIVE
424	2009 FORD 350 VAN	13	1FDNE31L19DA86664	2120	3347	90	1	3	26	NO	11	G	NO	RS 08185	ACTIVE
425	2009 FORD 350 VAN	13	1FDNE31L79DA86670	2121	31996	90	1	3	26	NO	11	G	NO	RS08181	ACTIVE
426	2009 FORD 350 VAN	13	1FDNE31L99DA86668	2122	3650	90	1	3	26	NO	11	G	NO	RS 08178	ACTIVE
427	2009 FORD 350 VAN	13	1FDNE31L79DA86667	2123	47	90	1	3	26	NO	11	G	NO	RS08179	ACTIVE
428	2009 FORD 350 VAN	13	1FDNE31L69DA86675	2124	2462	90	1	3	26	NO	11	G	NO	RS08174	ACTIVE
429	2009 FORD 350 VAN	13	1FDNE31L09DA86669	2125	13536	90	1	3	26	NO	11	G	NO	RS08169	ACTIVE
430	2009 FORD 350 VAN	13	1FDNE31L09DA86672	2126	11272	90	1	3	26	NO	11	G	NO	RS08168	ACTIVE
431	2009 FORD 350 VAN	13	1FDNE31L29DA86673	2127	58	90	1	3	26	NO	11	G	NO	RS08171	ACTIVE
432	2009 FORD 350 VAN	13	1FDNE31L59DA86666	2128	921	90	1	3	26	NO	11	G	NO	RS08170	ACTIVE
433	2009 FORD 350 VAN	13	1FDNE31L99DA86671	2129	13760	90	1	3	26	NO	11	G	NO	RS08161	ACTIVE
434	2009 FORD 350 VAN	13	1FDNE31L49DA86674	2130	23400	90	1	3	26	NO	11	G	NO	RS08162	ACTIVE
435	2010 ARBOC CHEVY BUS 13'	11	1GB9G5A69A1105056	7000	7157	100	1	5	159	YES	13+3	D	NO	95022C	ACTIVE
436	2010 ARBOC CHEVY BUS 13'	11	1GB9G5A69A1104843	7001	14120	100	1	5	159	YES	13+3	D	NO	95590C	ACTIVE
437	2010 ARBOC CHEVY BUS 13'	11	1GB9G5A62A1105660	7002	12505	100	1	5	159	YES	13+3	D	NO	95587C	ACTIVE
438	2010 ARBOC CHEVY BUS 13'	11	1GB9G5A60A1105964	7003	10880	100	1	5	159	YES	13+3	D	NO	95591C	ACTIVE
439	2010 ARBOC CHEVY BUS 13'	11	1GB9G5A63A1105604	7004	10321	100	1	5	159	YES	13+3	D	NO	95030C	ACTIVE
440	2010 ARBOC CHEVY BUS 13'	11	1GB9G5A65A1105491	7005	11351	100	1	5	159	YES	13+3	D	NO	95031C	ACTIVE
441	2010 ARBOC CHEVY BUS 13'	11	1GB9G5A64A1106096	7006	12505	100	1	5	159	YES	13+3	D	NO	95024C	ACTIVE
442	2010 ARBOC CHEVY BUS 13'	11	1GB9G5A65A1106043	7007	13417	100	1	5	159	YES	13+3	D	NO	95023C	ACTIVE
443	2010 ARBOC CHEVY BUS 13'	11	1GB9G5A64A1105532	7008	13819	100	1	5	159	YES	13+3	D	NO	95032C	ACTIVE
444	2010 ARBOC CHEVY BUS 13'	11	1GB9G5A62A1105707	7009	13182	100	1	5	159	YES	13+3	D	NO	95586C	ACTIVE
445	2010 ARBOC CHEVY BUS 13'	11	1GB9G5A67A1105332	7010	12520	100	1	5	159	YES	13+3	D	NO	95033C	ACTIVE
446	2010 ARBOC CHEVY BUS 13'	11	1GB9G5A67A1106223	7011	15213	100	1	5	159	YES	13+3	D	NO	95034C	ACTIVE
447	2010 ARBOC CHEVY BUS 13'	11	1GB9G5A60A1106242	7012	15646	100	1	5	159	YES	13+3	D	NO	95082C	ACTIVE
448	2010 ARBOC CHEVY BUS 13'	11	1GB9G5A62A1106162	7013	14290	100	1	5	159	YES	13+3	D	NO	95025C	ACTIVE
449	2010 ARBOC CHEVY BUS 13'	11	1GB9G5A65A1105376	7014	12782	100	1	5	159	YES	13+3	D	NO	95589C	ACTIVE
450	2010 ARBOC CHEVY BUS 13'	11	1GB9G5A68A1123211	7015	13891	100	1	5	159	YES	13+3	D	NO	95029C	ACTIVE
451	2010 ARBOC CHEVY BUS 13'	11	1GB9G5A61A1123261	7016	12282	100	1	5	159	YES	13+3	D	NO	95035C	ACTIVE
452	1917 / FERRY BOAT	26	214872	CARL2	0	70				NO	150	D	NO	N/A	ACTIVE
	<b>452</b>								<b>44,818</b>						